



Output 3.3V, Regulated Charge Pump DC/DC Converter

GENERAL DESCRIPTION

The PW5410B is a low noise, constant frequency (1.2MHz) switched capacitor voltage doubler. It produces a regulated output voltage from 1.8V to 5V input with up to 100mA of output current. Low external parts count (one flying capacitor and two small bypass capacitors at VIN and VOUT) make the PW5410B ideally suited for small, battery-powered applications.

The new charge-pump architecture maintains constant switching frequency to no load and reduces both output and input ripple. The PW5410B have thermal shutdown capability and can survive a continuous short circuit from VOUT to GND. Built-in soft-start circuitry prevents excessive inrush current during start-up.

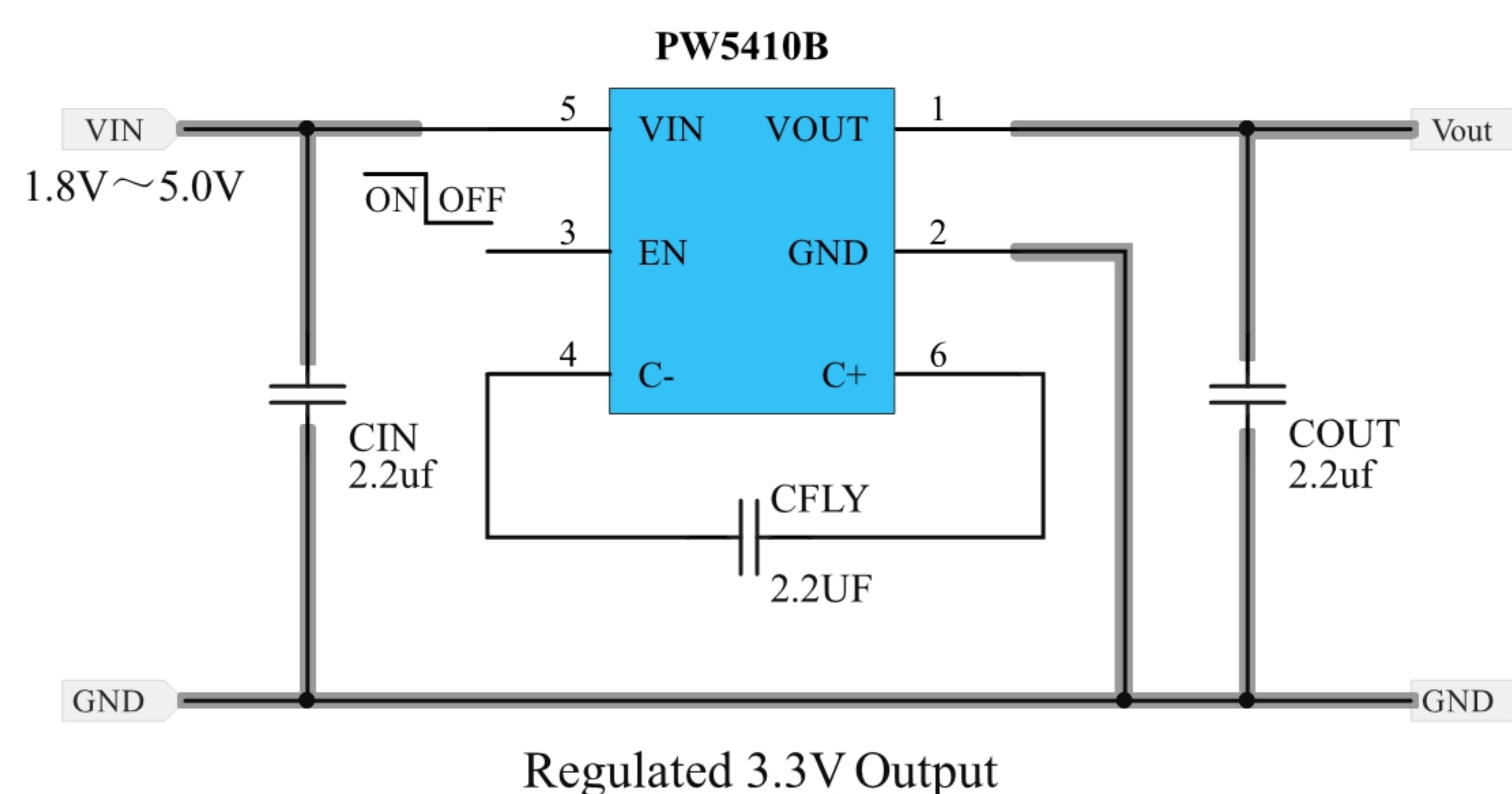
FEATURES

- Fixed 3.3V \pm 4% Output
- VIN Range: 1.8V ~ 5V
- Output Current: up to 250mA (VIN=3V)
- Low Noise Constant Frequency Operation
- Shutdown Current: <1 μ A
- Short-Circuit Protection
- Soft-start
- No Inductors
- Available in Low Profile 6-Lead SOT-23 Package

APPLICATIONS

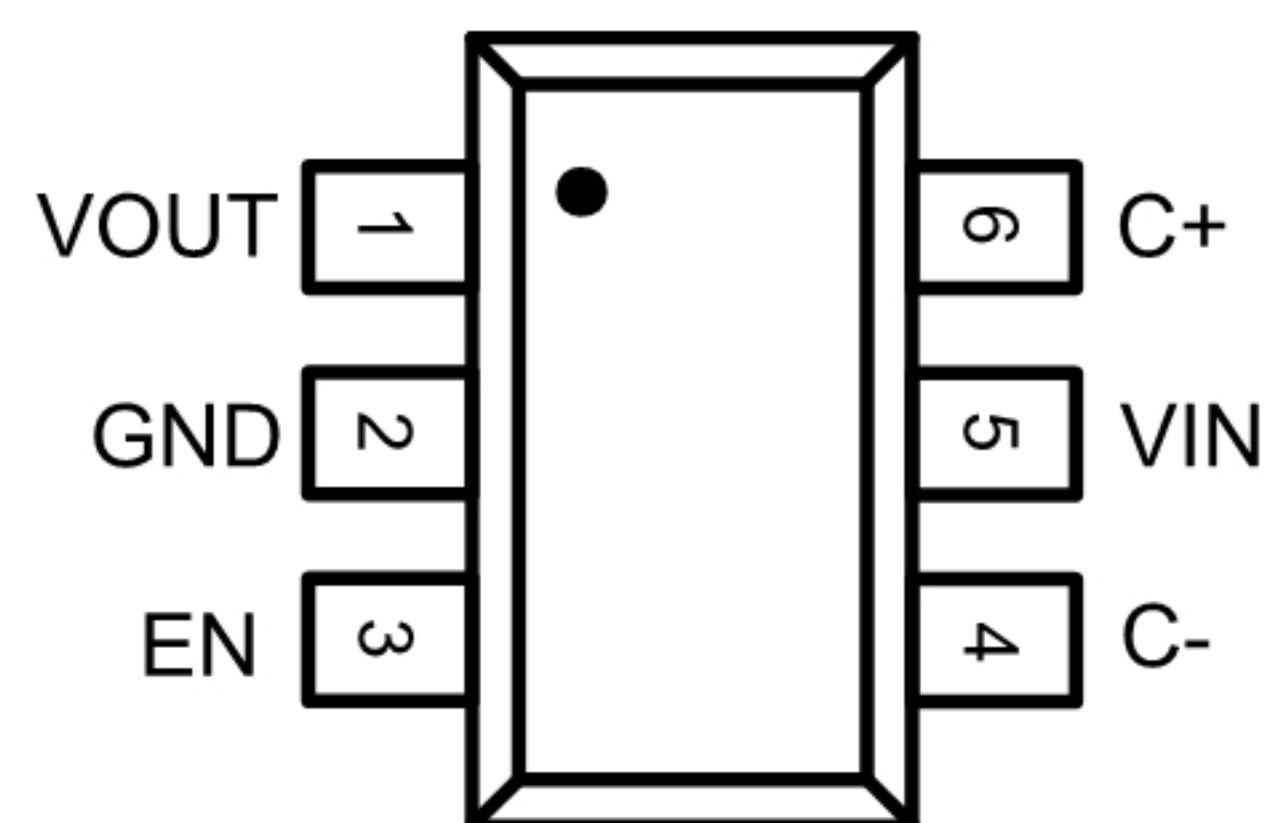
- White LED Backlighting
- Li-Ion Battery Backup Supplies
- Local 3V to 5V Conversion
- Smart Card Readers
- PCMCIA Local 5V Supplies

TYPICAL APPLICATION CIRCUIT



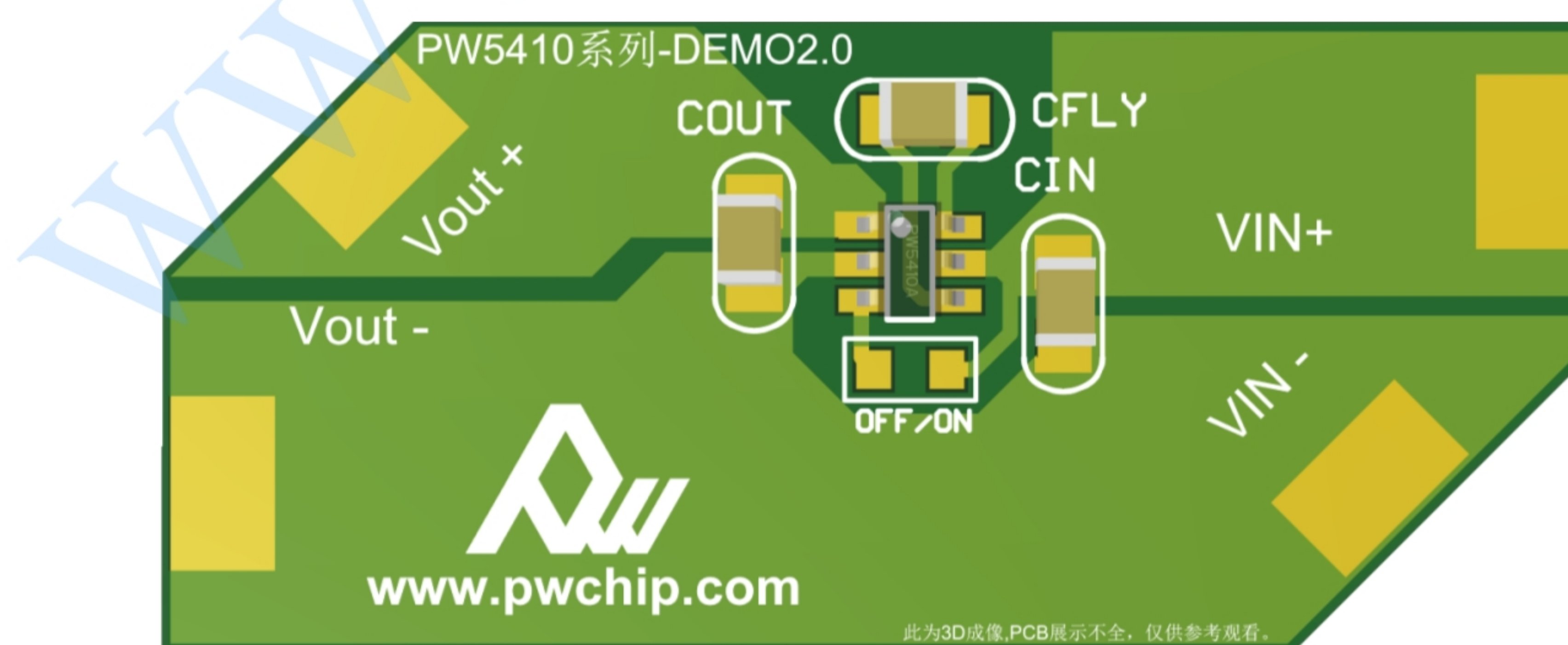


PIN ASSIGNMENT/DESCRIPTION



Pin Number	Pin Name	Function
1	VOUT	Regulated Output Voltage. VOUT should be bypassed with a low ESR ceramic capacitor providing at least 2.2μF of capacitance as close to the pin as possible for best performance.
2	GND	Ground. These pins should be tied to a ground plane for best performance. The exposed pad must be soldered to PCB ground to provide electrical contact and optimum thermal performance.
3	EN	ON/OFF Control (High Enable), Active Low Shutdown Input. This pin must not be allowed to float.
4	C-	Flying Capacitor Negative Terminal
5	VIN	Input Supply Voltage. VIN should be bypassed with a low ESR ceramic capacitor providing at least 2.2μF of capacitance as close to the pin as possible for best performance.
6	C+	Flying Capacitor Positive Terminal

Typical Application



Recommended Layout

Layout Considerations

Due to its high switching frequency and the high transient currents produced by the PW5410B, careful board layout is necessary. A true ground plane and short connections to all capacitors will improve performance and ensure proper regulation under all conditions.



Parameter	VALUE	Unit
Input Supply Voltage	-0.3V ~ 6	V
EN Pin Voltage	-0.3V ~ 6	V
Output Voltage	-0.3V ~ 3.5	V
Output Current	300	mA
Operating Temperature Range (Note 2))	-40°C ~ +85	°C
Maximum Junction Temperature	+150	°C
Storage Temperature Range	-65°C ~ +125	°C
Lead Temperature (Soldering, 10 sec.)	+265	°C

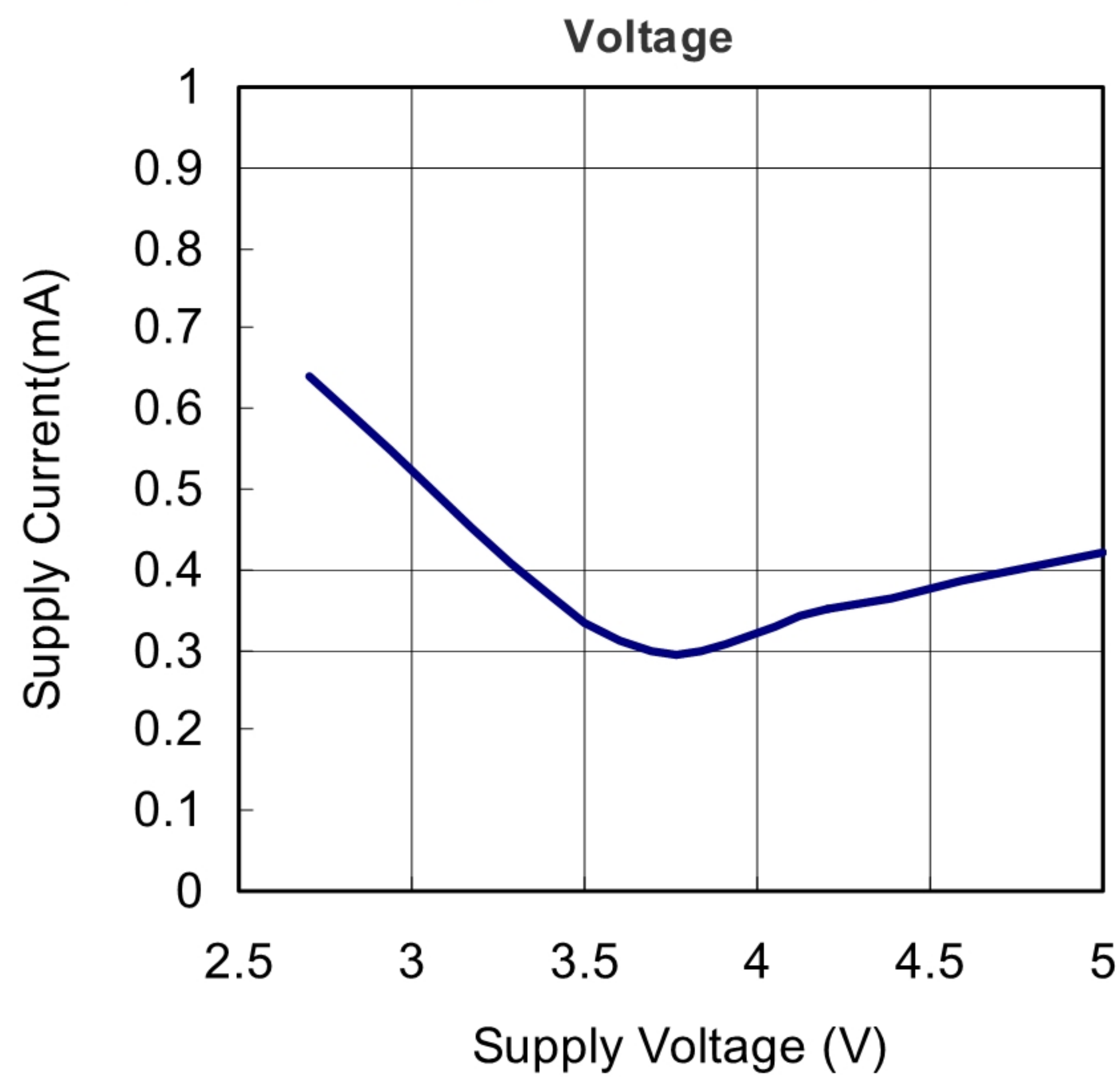
Exposure to absolute maximum rating conditions for extended periods may remain possibility to affect device reliability.

ELECTRICAL CHARACTERISTICS

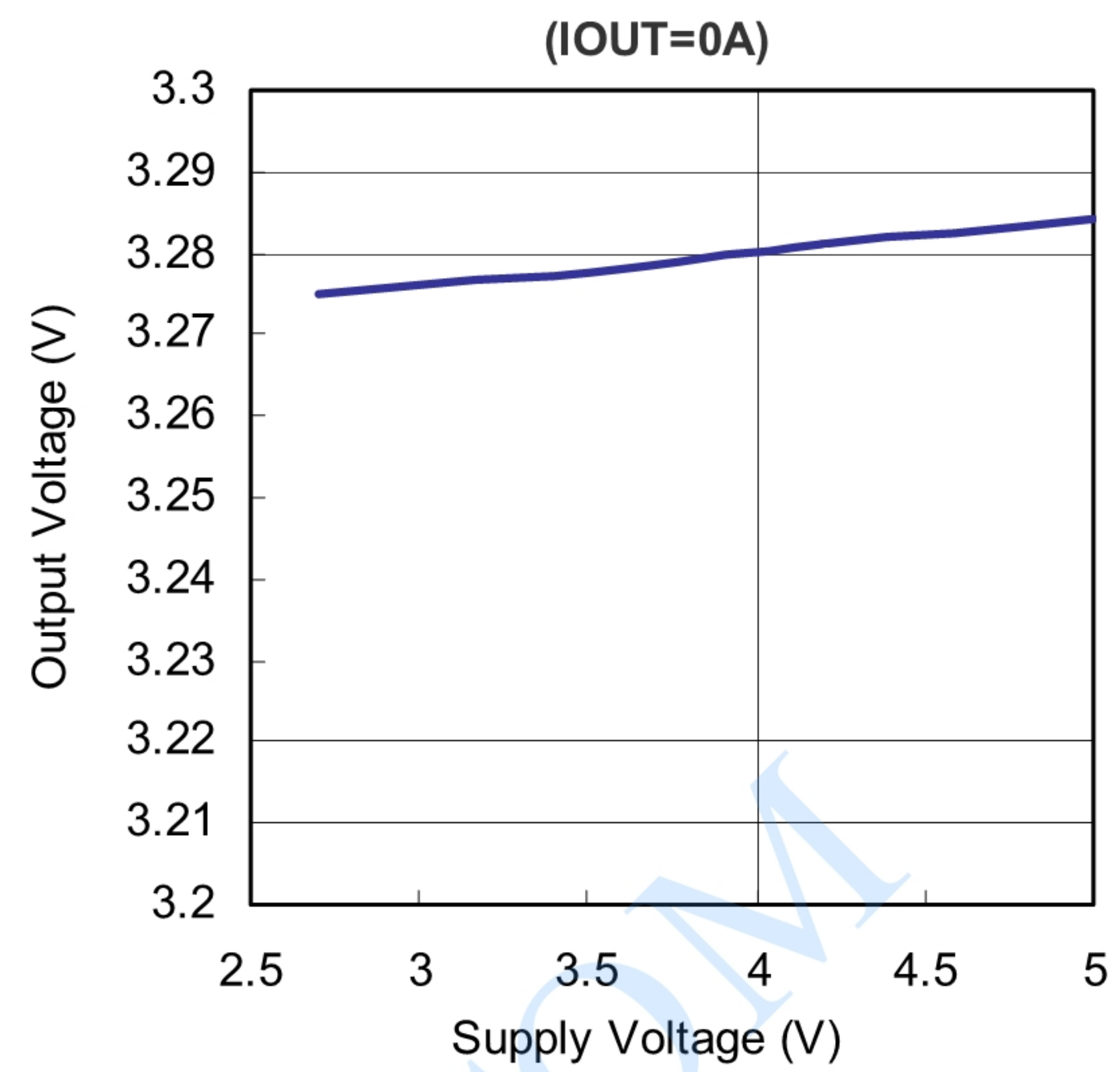
SYMBOL	PARAMETER	CONDITIONS	MIN	TYP	MAX	UNITS
VIN	Input Voltage Range		1.8		5	V
VOUT	Output Voltage Range		3.17	3.3	3.43	V
ISHDN	Shutdown Current	VEN = 0V, VOUT = 0V		0.2		μA
INO LOAD	No load input current	IOUT = 0mA, VIN = 2.7V		0.65		mA
fOSC	Switching Frequency	VIN = 2.7V, IOUT = 100mA		1.2		MHz



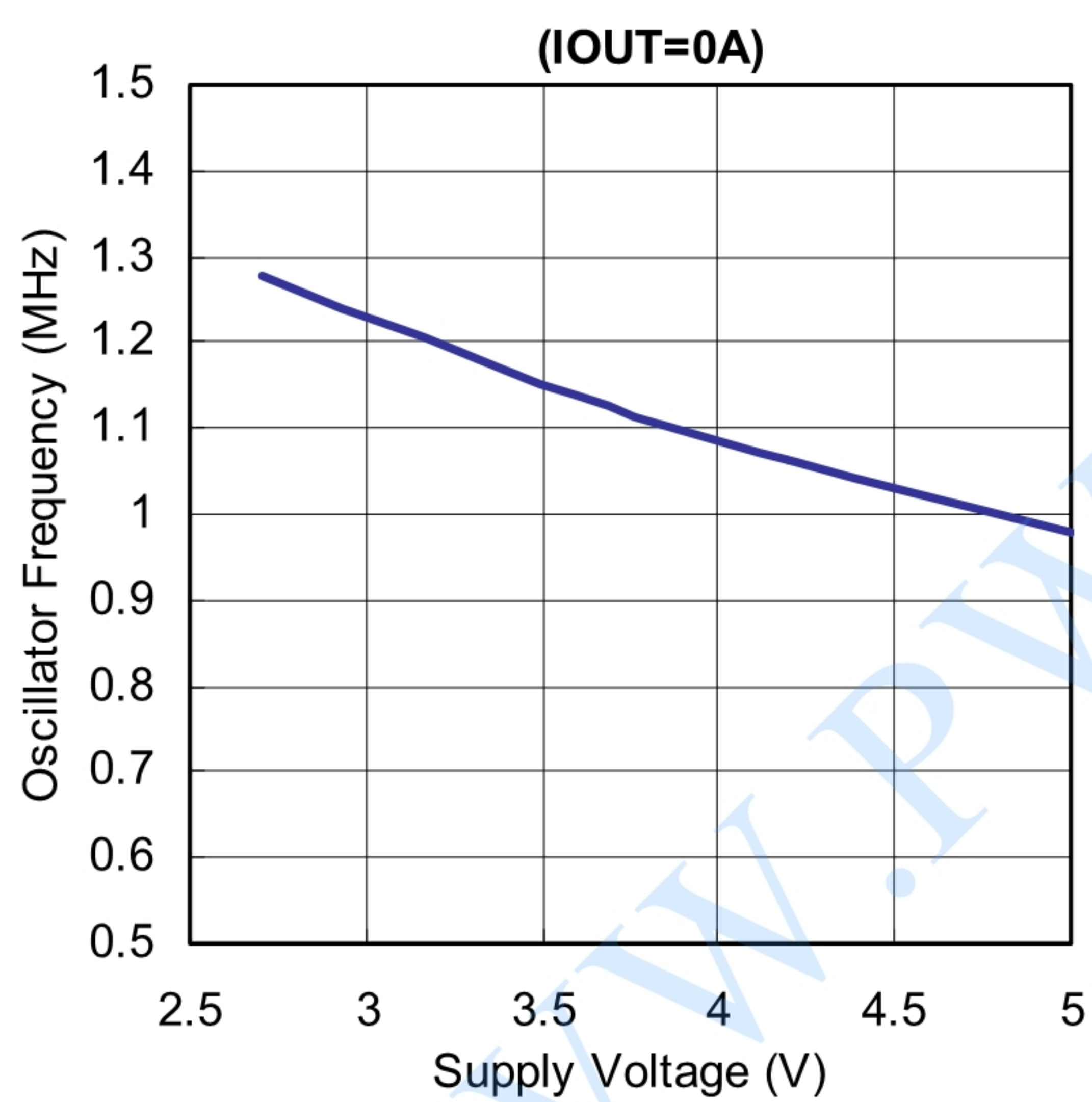
TYPICAL PERFORMANCE CHARACTERISTICS



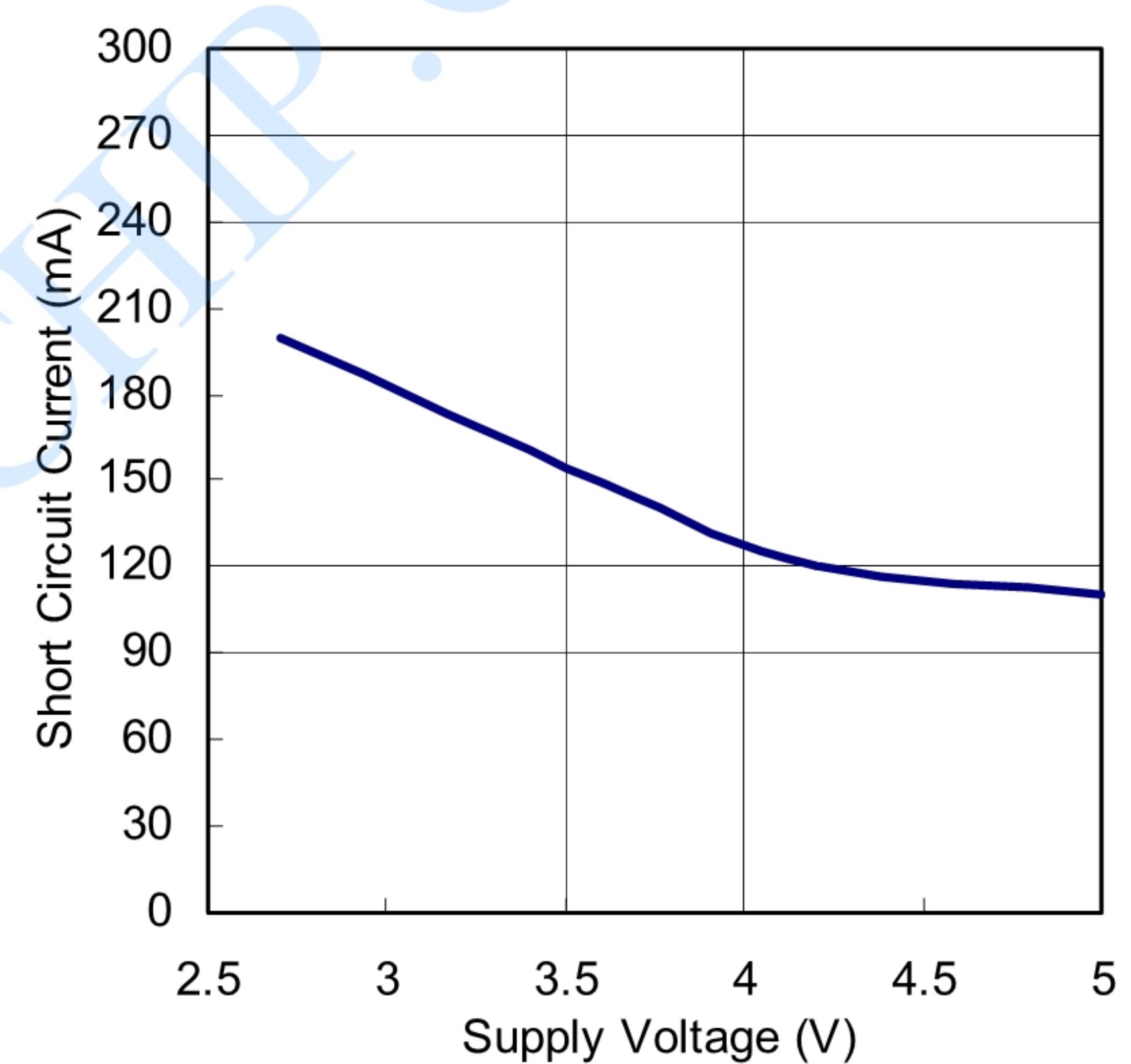
No Load Supply Current vs. Supply



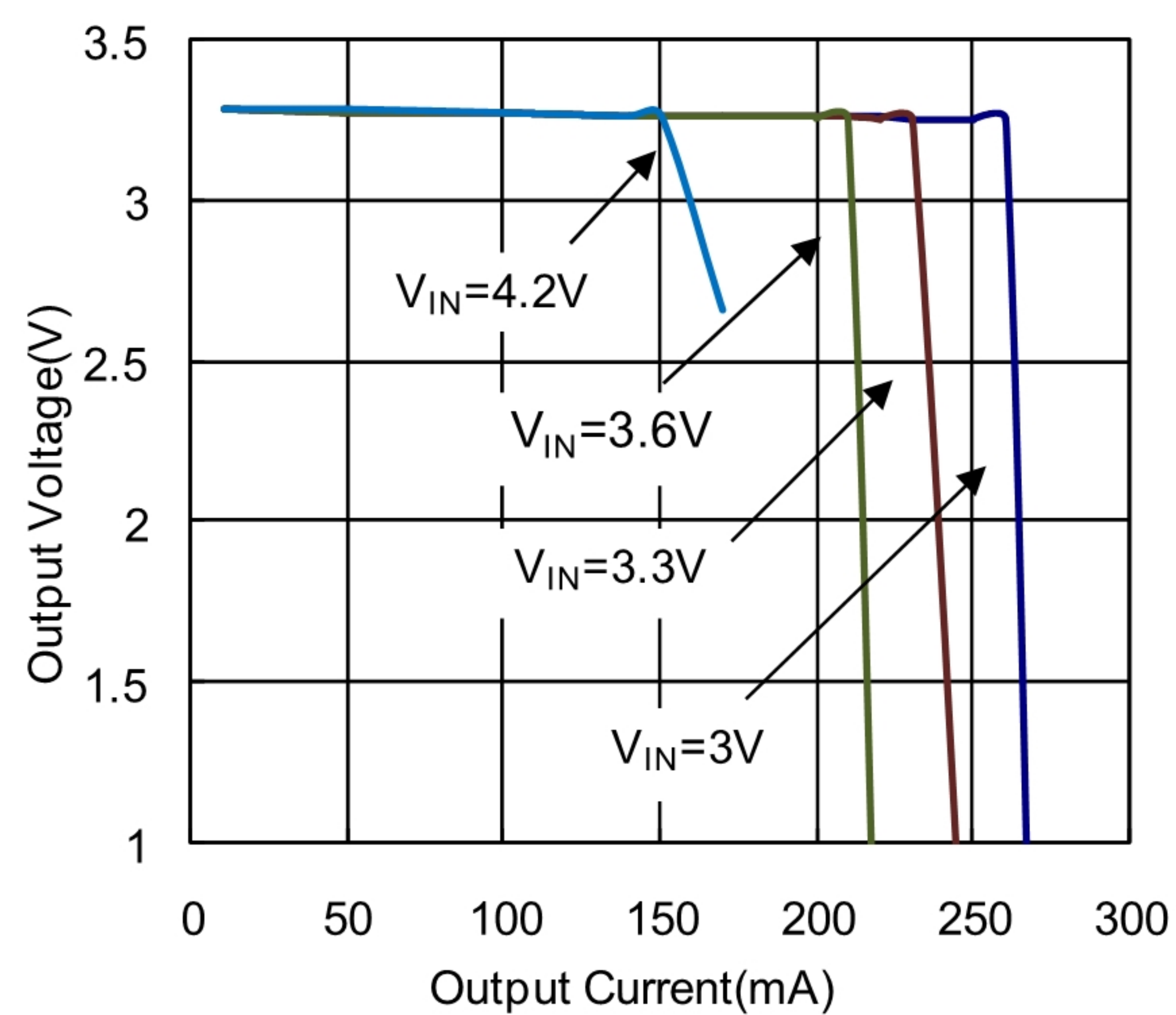
Output Voltage vs. Supply Voltage



Oscillator Frequency vs. Supply Voltage



Short Circuit Current vs. Supply Voltage



Output Voltage vs. Output Current



Application Information

Operation

The PW5410B use a switched capacitor charge pump to boost VIN to a regulated output voltage. Regulation is achieved by sensing the output voltage through an internal resistor divider and modulating the charge pump output current based on the error signal. A 2-phase nonoverlapping clock activates the charge pump switches. The flying capacitor is charged from VIN on the first phase of the clock. On the second phase of the clock it is stacked in series with VIN and connected to VOUT. This sequence of charging and discharging the flying capacitor continues at a free running frequency of 1.2MHz (typ).

In shutdown mode all circuitry is turned off and the PW5410B draw only leakage current from the VIN supply. Furthermore, VOUT is disconnected from VIN. The EN pin is a CMOS input with a threshold voltage of approximately 0.8V. The PW5410B is in shutdown when a logic low is applied to the EN pin. Since the EN pin is high impedance CMOS input it should never be allowed to float. To ensure that its state is defined it must always be driven with a valid logic level.

Short-Circuit Protection

The PW5410B have built-in short-circuit current limiting. At short-circuit condition, it will automatically limit the output current to approximately 300mA.

Soft-Start

The PW5410B have built-in soft-start circuitry to prevent excessive current flow at VIN during start-up. The soft-start time is preprogrammed to approximately 2.5ms, so the start-up current will be primarily dependent upon the output capacitor.

VIN, VOUT Capacitor Selection

The style and value of capacitors used with the PW5410B determine several important parameters such as regulator control loop stability, output ripple, charge pump strength and minimum start-up time. To reduce noise and ripple, it is recommended that low ESR ($<0.1\Omega$) ceramic capacitors be used for both CIN and COUT. These capacitors should be 2.2 μ F or greater. Tantalum and aluminum capacitors are not recommended because of their high ESR.

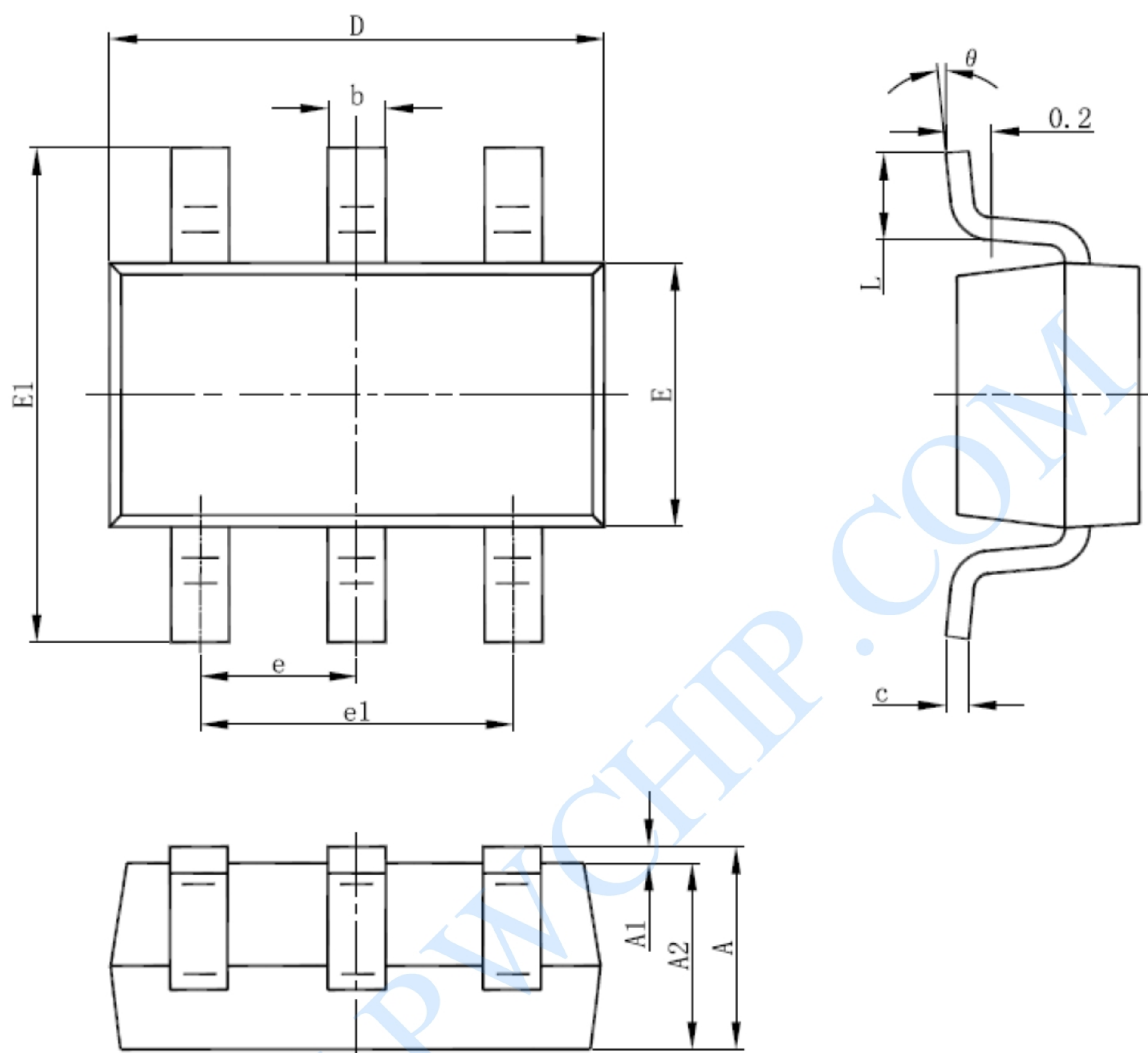
Flying Capacitor Selection

Warning: A polarized capacitor such as tantalum or aluminum should never be used for the flying capacitor since its voltage can reverse upon start-up of the PW5410B. Low ESR ceramic capacitors should always be used for the flying capacitor. The flying capacitor controls the strength of the charge pump. In order to achieve the rated output current it is necessary to have at least 2.2 μ F of capacitance for the flying capacitor.



PACKAGE DESCRIPTION

SOT23-6L



Symbol	Dimensions In Millimeters		Dimensions In Inches	
	Min	Max	Min	Max
A	1.050	1.250	0.041	0.049
A1	0.000	0.100	0.000	0.004
A2	1.050	1.150	0.041	0.045
b	0.300	0.500	0.012	0.020
c	0.100	0.200	0.004	0.008
D	2.820	3.020	0.111	0.119
E	1.500	1.700	0.059	0.067
E1	2.650	2.950	0.104	0.116
e	0.950(BSC)		0.037(BSC)	
e1	1.800	2.000	0.071	0.079
L	0.300	0.600	0.012	0.024
θ	0°	8°	0°	8°



IMPORTANT NOTICE

Wuxi PWChip Semi Technology CO., LTD (PW) reserves the right to make corrections, modifications, enhancements, improvements, and other changes to its products and services at any time and to discontinue any products or services. Customers should obtain the latest relevant information before placing orders and should verify that such information is current and complete.

PW assumes no liability for applications assistance or customer product design. Customers are responsible for their products and applications using PW components.

PW products are not authorized for use in safety-critical applications (such as life support devices or systems) where a failure of the PW product would reasonably be expected to affect the safety or effectiveness of that devices or systems.

The information included herein is believed to be accurate and reliable. However, PW assumes no responsibility for its use; nor for any infringement of patents or other rights of third parties which may result from its use.