

1- Line Bidirectional ESD Protection Diode

General description

The PWESD-7VSDA is designed to protect voltage sensitive components from ESD and transient voltage events. Excellent clamping capability, low leakage, and fast response time, make these parts ideal for ESD protection on designs where board space is at a premium.

Features and benefits

- Bidirectional ESD protection of one line
- Reverse stand-off voltage: 7.0V Max
- Low leakage current: nA Level
- Response time is typically < 1 ns
- Complies with following standards: IEC 61000-4-2 (ESD) immunity test Air discharge: $\pm 30\text{KV}$, Contact discharge: $\pm 30\text{KV}$ -- IEC61000-4-5 (Lightning) 20A (8/20 μs)
- RoHS Compliant



Application information

- Cell Phone Handsets and Accessories
- Microprocessor based equipment
- Personal Digital Assistants (PDA's)
- Notebooks, Desktops, and Servers

Ordering information

Par Number	Package	Packaging	Reel Size
PWESD-7VSDA	SOD323	3000/Tape & Reel	7 inch

Schematic & Pin configuration

Simplified outline	Graphic symbol
	

Maximum Ratings

($T_{OP} = 25\text{ }^{\circ}\text{C}$, unless otherwise specified)

Parameter	Symbol	Value	Unit
Peak Pulse Power ($t_p = 8/20\mu\text{s}$)	P_{PPM}	320	W
Peak Pulse Current ($t_p = 8/20\mu\text{s}$)	I_{PPM}	20	A
ESD voltage IEC 61000-4-2 (air discharge)	V_{ESD}	30	kV
ESD voltage IEC 61000-4-2 (contact discharge)	V_{ESD}	30	kV
Maximum lead temperature for soldering during 10s	T_L	260	$^{\circ}\text{C}$
Storage Temperature Range	T_{stg}	-55 to +150	$^{\circ}\text{C}$
Operating Temperature Range	T_{OP}	-40 to +125	$^{\circ}\text{C}$

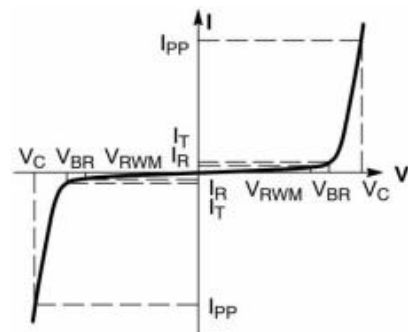
Electrical Characteristics

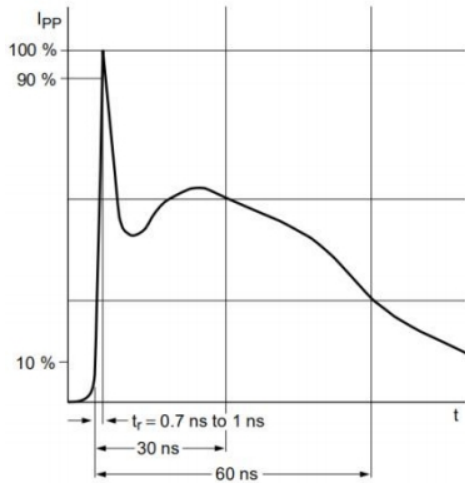
($T_{OP} = 25\text{ }^{\circ}\text{C}$, unless otherwise specified)

Parameter	Symbol	Min	Typ	Max	Unit	Condition
Reverse Working Voltage	V_{RWM}	--	--	7.0	V	
Breakdown Voltage	V_{BR}	8.0	--	9.4	V	$I_T = 1\text{mA}$
Leakage Current I_{Leak}	I_R	--	--	100	nA	$V_{RWM} = 7.0\text{V}$
Clamping Voltage	V_C	--	9.0	--	V	$I_{PP} = 1.0\text{A}, T_p = 8/20\mu\text{s}$
Clamping Voltage	V_C	--	15	16	V	$I_{PP} = 20\text{A}, T_p = 8/20\mu\text{s}$
Junction Capacitance	C_J	--	16	18	pF	$V_R = 0\text{V}, f = 1\text{MHz}$

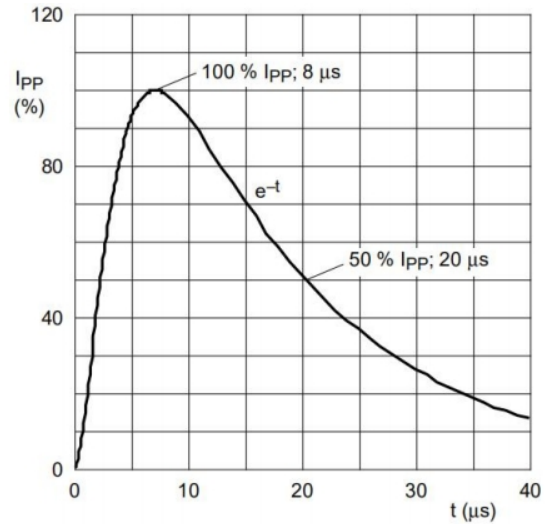
Portion Electronics Parameter

Symbol	Parameter
I_{PP}	Maximum Reverse Peak Pulse Current
V_C	Clamping Voltage @ I_{PP}
V_{RWM}	Working Peak Reverse Voltage
I_R	Maximum Reverse Leakage Current @ V_{RWM}
I_T	Test Current
V_{BR}	VBR Breakdown Voltage @ I_T





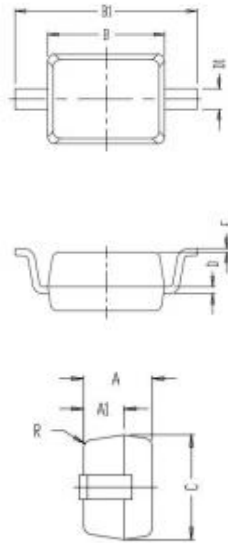
IEC61000-4-2 Waveform



IEC 61000-4-5 Waveform(8/20µs pulse)

Package Outline Dimensions

SOD323



SYMBOL	Dimensions In Millimet	
	MIN	MAX
A	0.700	0.900
A1	0.450	0.600
B	1.600	1.800
B1	2.500	2.750
C	1.200	1.400
D	0.080	0.150
D1	0.250	0.350
E	0.000	0.100
R	0.010	0.060

IMPORTANT NOTICE

Wuxi PWChip Semi Technology CO., LTD (PW) reserves the right to make corrections, modifications, enhancements, improvements, and other changes to its products and services at any time and to discontinue any products or services. Customers should obtain the latest relevant information before placing orders and should verify that such information is current and complete.

PW assumes no liability for applications assistance or customer product design. Customers are responsible for their products and applications using PW components.

PW products are not authorized for use in safety-critical applications (such as life support devices or systems) where a failure of the PW product would reasonably be expected to affect the safety or effectiveness of that devices or systems.

The information included herein is believed to be accurate and reliable. However, PW assumes no responsibility for its use; nor for any infringement of patents or other rights of third parties which may result from its use.