



N-Channel Enhancement Mode MOSFET

GENERAL DESCRIPTION

The PW8205A8TS is the highest performance trench N-ch MOSFETs with extreme high cell density, which provide excellent RDS(ON) and gate charge for most of the small power switching and load switch applications. The meet the RoHS and Product requirement with full function reliability approved.

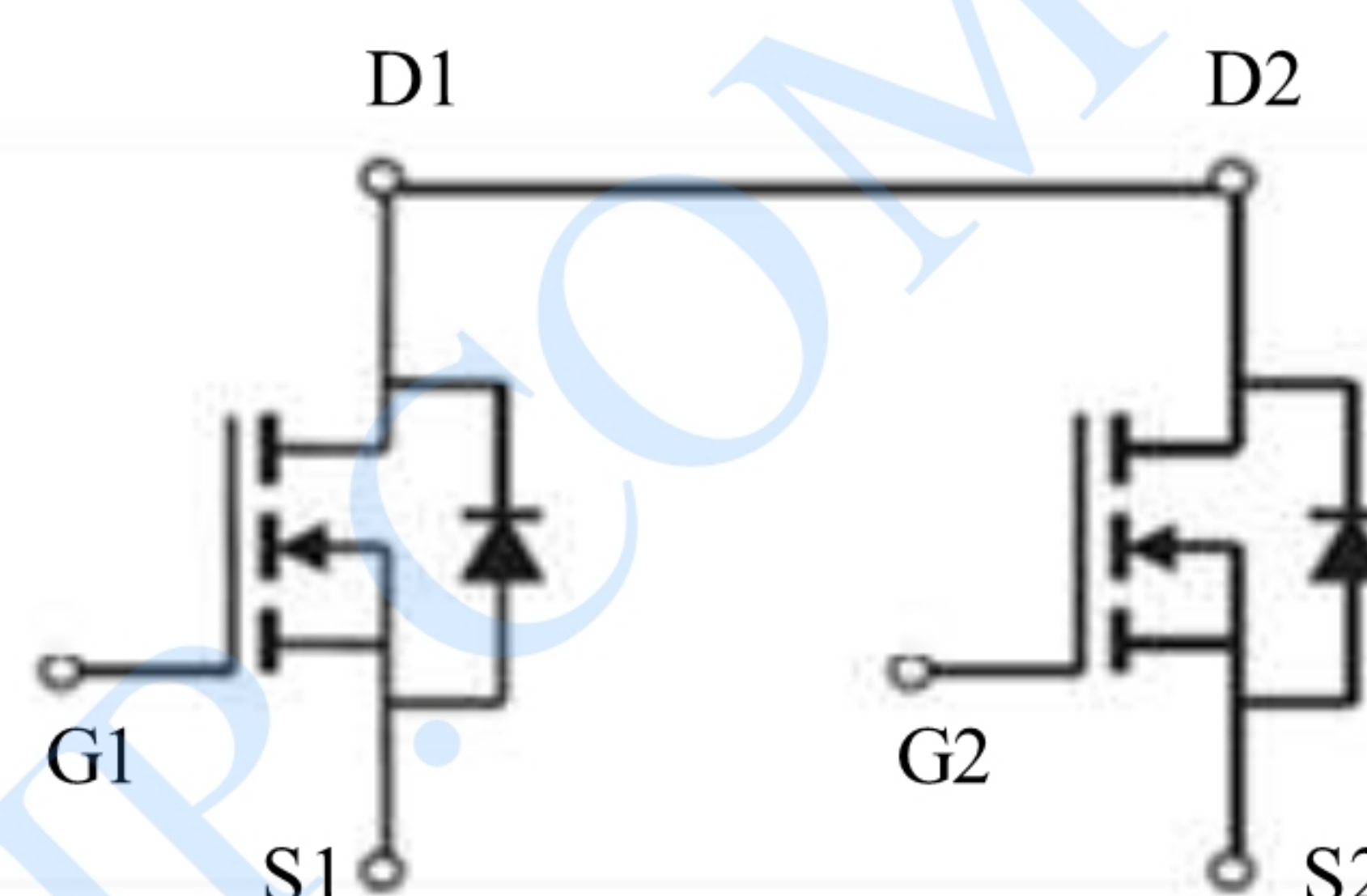
FEATURES

$V_{DS} = 20V, I_D = 6A$

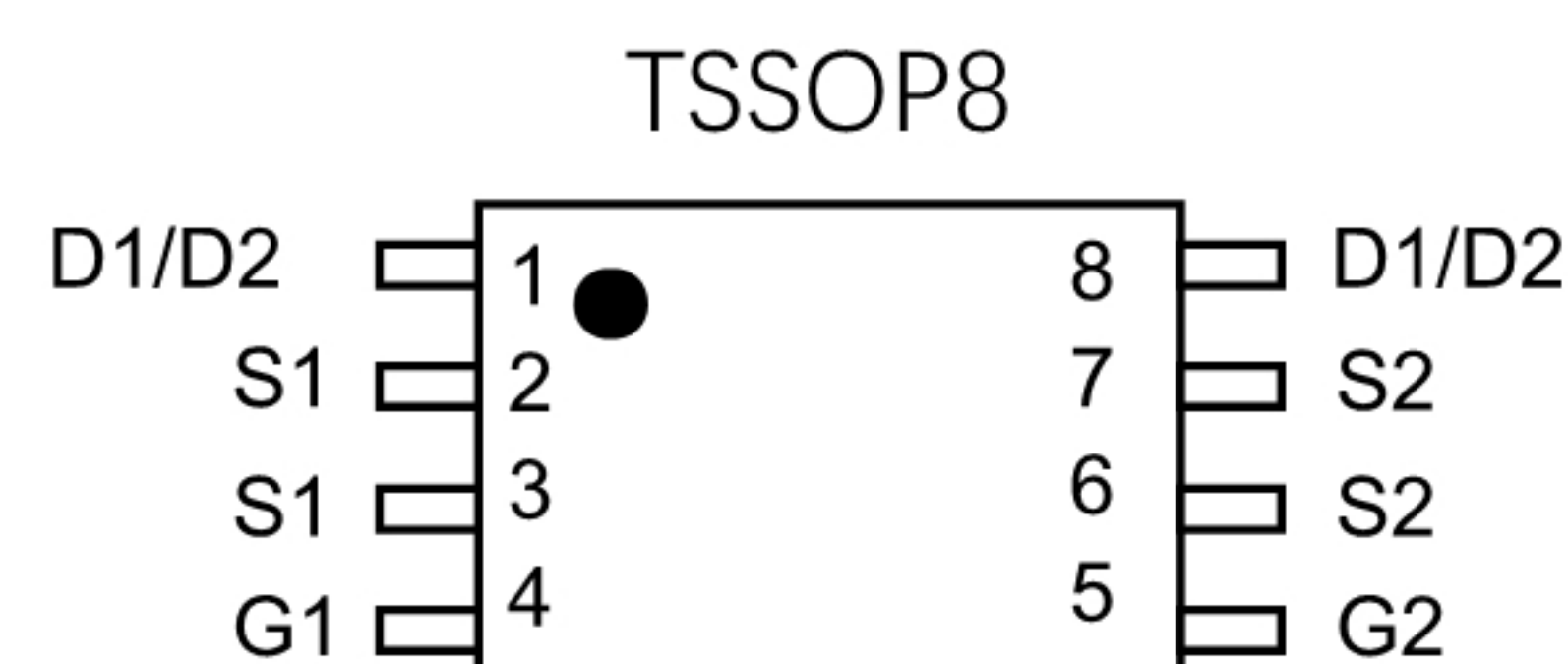
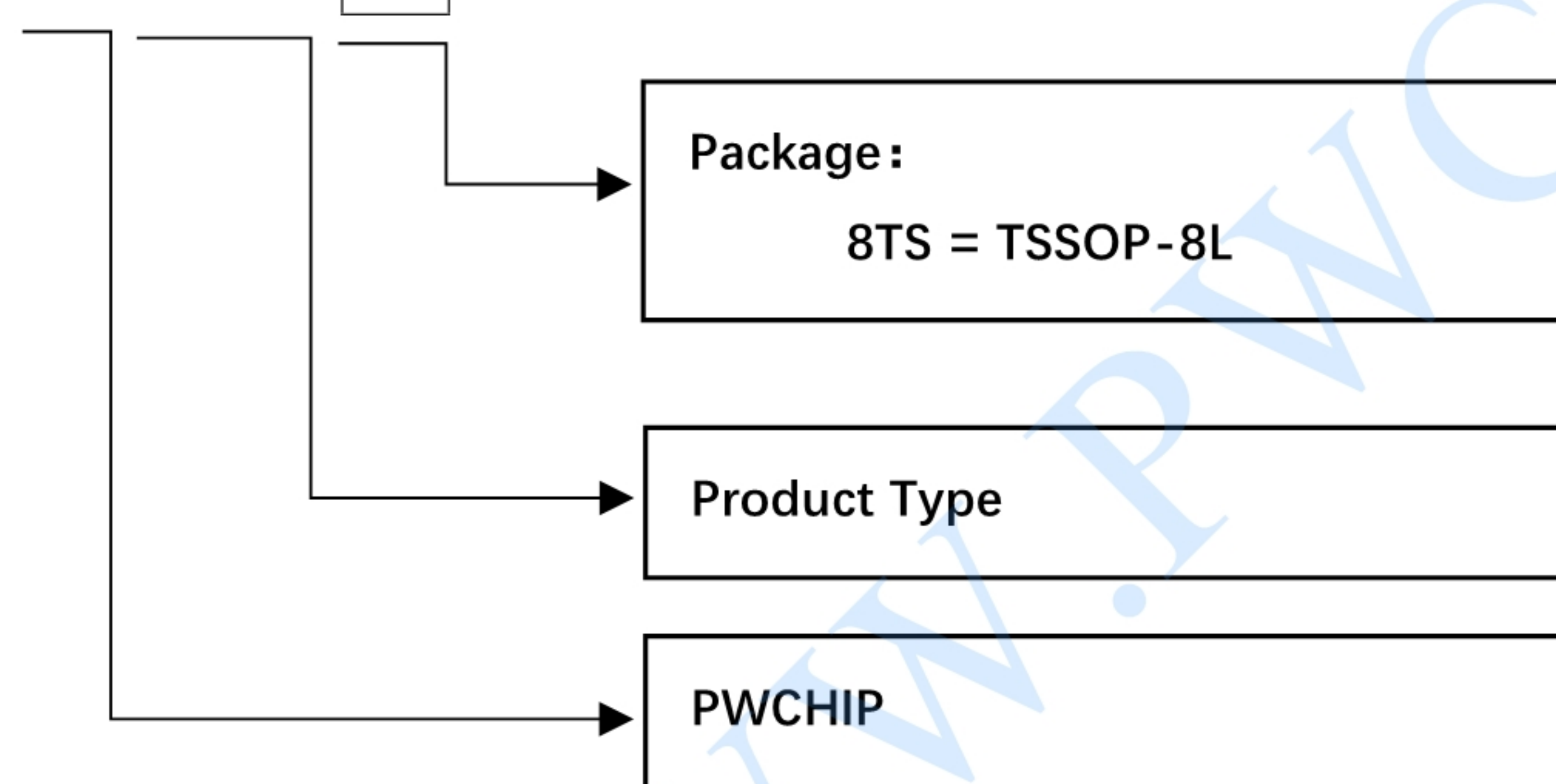
$R_{DS(ON)} < 27\text{ m}\Omega @ V_{GS}=4.5V$

$R_{DS(ON)} < 37\text{ m}\Omega @ V_{GS}=2.5V$

Available in a 8-Pin TSSOP8 Package



PW 8205A 8TS



Absolute Maximum Ratings (TA=25°C unless otherwise specified)

Parameter	Symbol	Rating	Unit
Drain-Source Voltage	V_{DS}	20	V
Gate-Source Voltage	V_{GS}	± 12	V
Drain Current-Continuous	I_D	6	A
Drain Current Pulsed ^(Note1)	I_{DM}	25	A
Maximum Power Dissipation	P_D	1.5	W
Storage Temperature Range	T_{STG}	-55 To 150	°C
Operating Junction Temperature Range	T_J	-55 To 150	°C
Thermal Resistance, Junction-to-Ambient ^(Note2)	$R_{\theta JA}$	83	°C/W



ELECTRICAL CHARACTERISTICS

(TA = 25°C, unless otherwise noted.)

Parameter	Symbol	Condition	Min	Typ	Max	Unit
Drain-Source Breakdown Voltage	BV _{DSS}	V _{GS} =0V I _D =250μA	20	21	-	V
Zero Gate Voltage Drain Current	I _{DSS}	V _{DS} =19.5V, V _{GS} =0V	-	-	1	μA
Gate-Body Leakage Current	I _{GSS}	V _{GS} =±10V, V _{DS} =0V	-	-	±100	nA
Gate Threshold Voltage	V _{GS(th)}	V _{DS} =V _{GS} , I _D =250μA	0.5	0.7	1.2	V
Drain-Source On-State Resistance	R _{DS(on)}	V _{GS} =4.5V, I _D =4.5A	-	21	27	mΩ
		V _{GS} =2.5V, I _D =3.5A	-	27	37	mΩ
Forward Transconductance	g _{FS}	V _{DS} =5V, I _D =4.5A	-	10	-	S
Input Capacitance	C _{iss}	V _{DS} =8V, V _{GS} =0V, F=1.0MHz	-	600	-	PF
Output Capacitance	C _{oss}		-	330	-	PF
Reverse Transfer Capacitance	C _{rss}		-	140	-	PF
Turn-on Delay Time	t _{d(on)}	V _{DD} =10V, I _D =1A V _{GS} =4.5V, R _{GEN} =6Ω	-	10	20	nS
Turn-on Rise Time	t _r		-	11	25	nS
Turn-Off Delay Time	t _{d(off)}		-	35	70	nS
Turn-Off Fall Time	t _f		-	30	60	nS
Total Gate Charge	Q _g	V _{DS} =10V, I _D =6A, V _{GS} =4.5V	-	10	15	nC
Gate-Source Charge	Q _{gs}		-	2.3	-	nC
Gate-Drain Charge	Q _{gd}		-	1.5	-	nC
Diode Forward Voltage ^(Note 3)	V _{SD}	V _{GS} =0V, I _S =1.7A	-	0.75	1.2	V
Diode Forward Current ^(Note 2)	I _S		-	-	1.7	A

Notes:

1. Repetitive Rating: Pulse width limited by maximum junction temperature.
2. Surface Mounted on FR4 Board, t ≤ 10 sec.
3. Pulse Test: Pulse Width ≤ 300μs, Duty Cycle ≤ 2%.
4. Guaranteed by design, not subject to production

Typical Characteristics

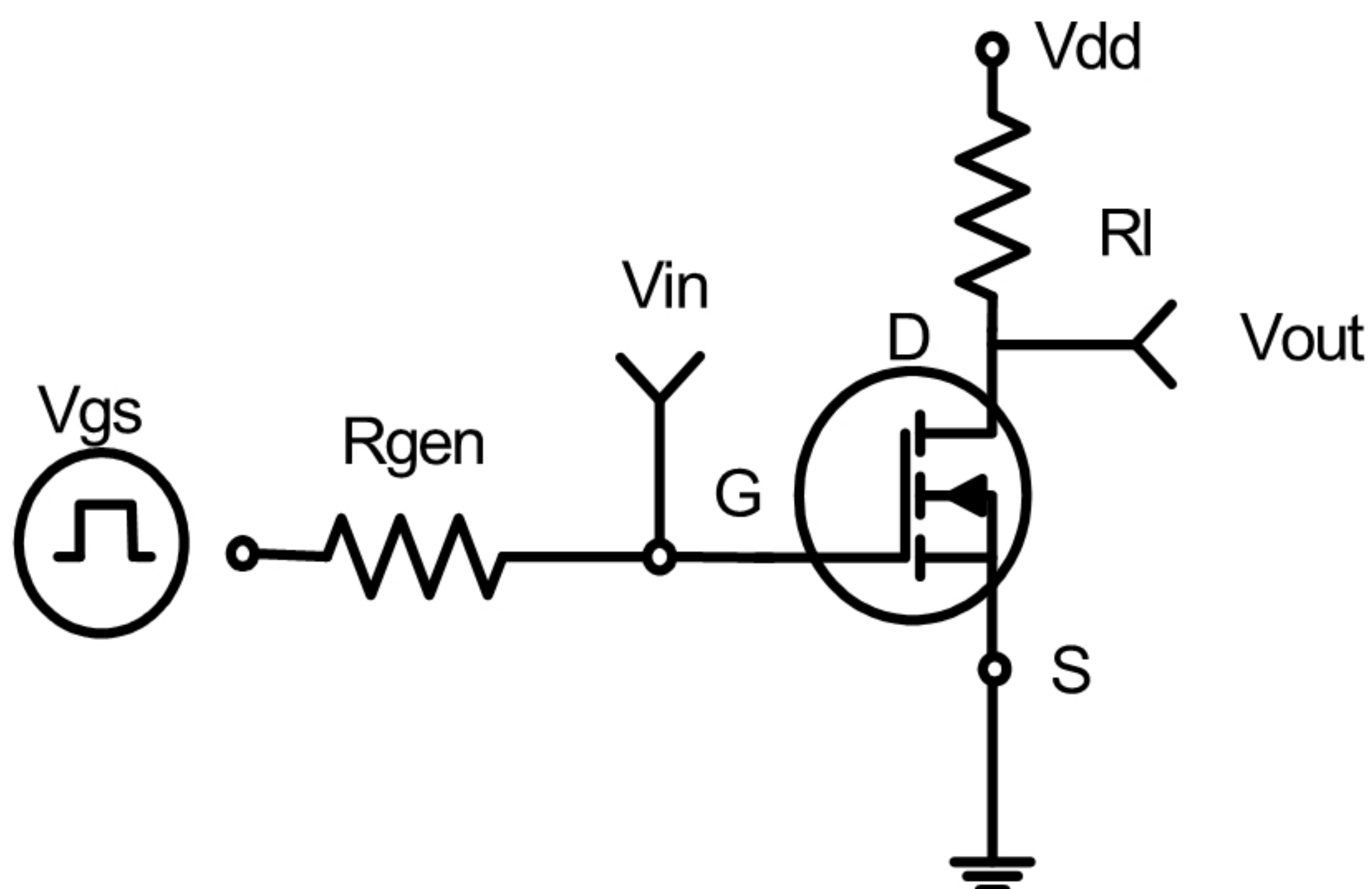


Fig.1 Switching Test Circuit

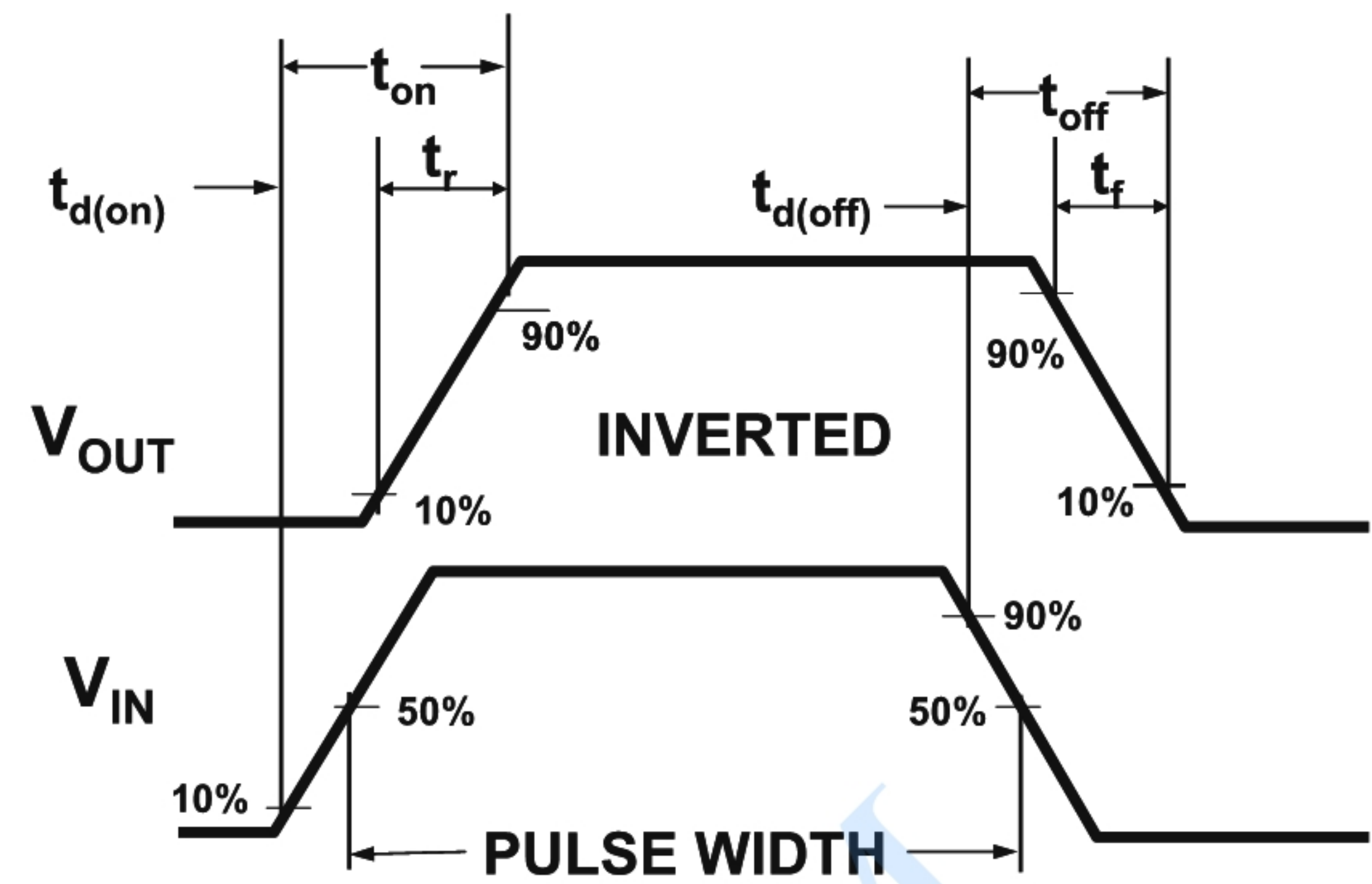


Fig.2 Switching Waveforms

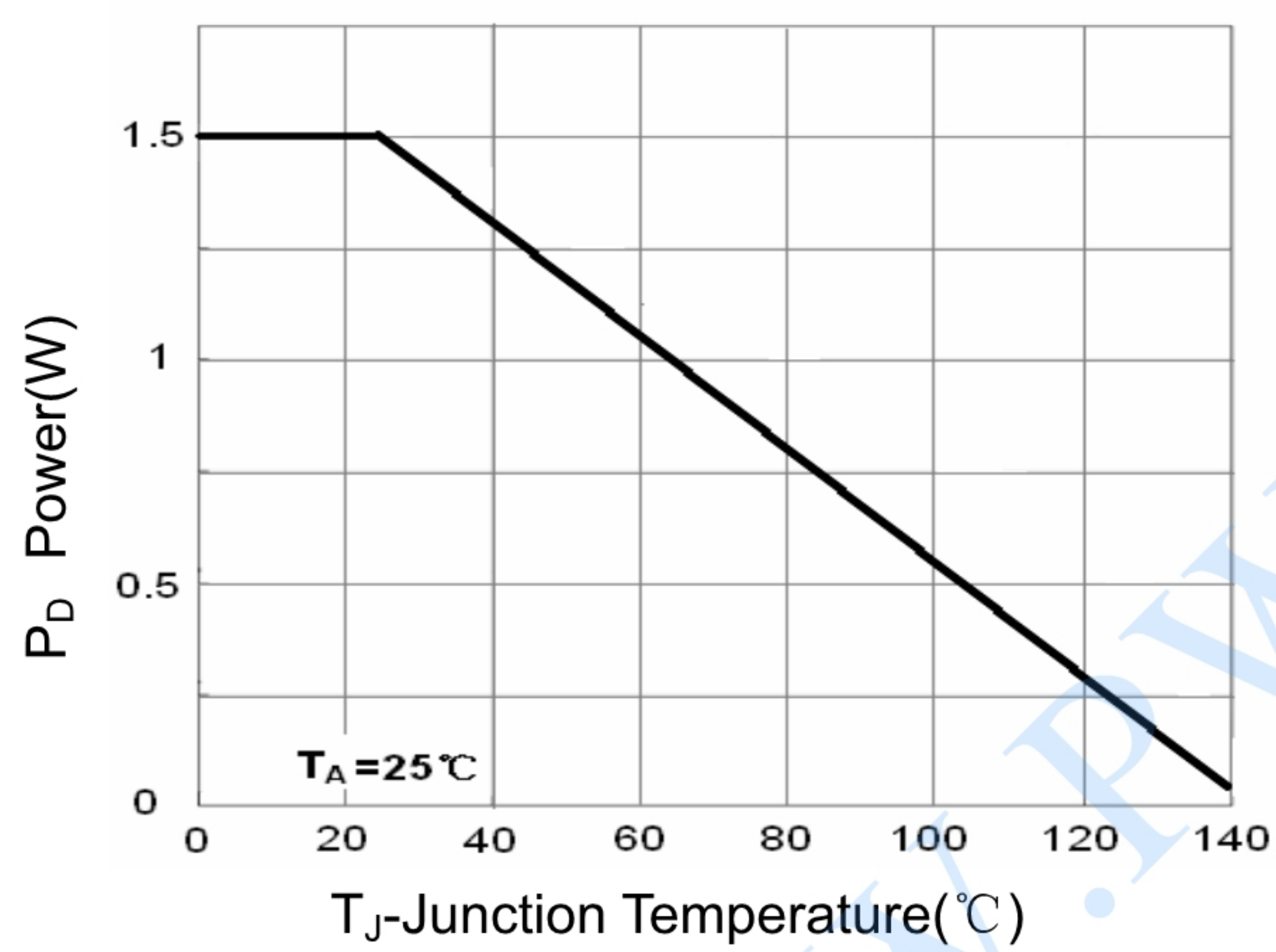


Fig.3 Power Dissipation

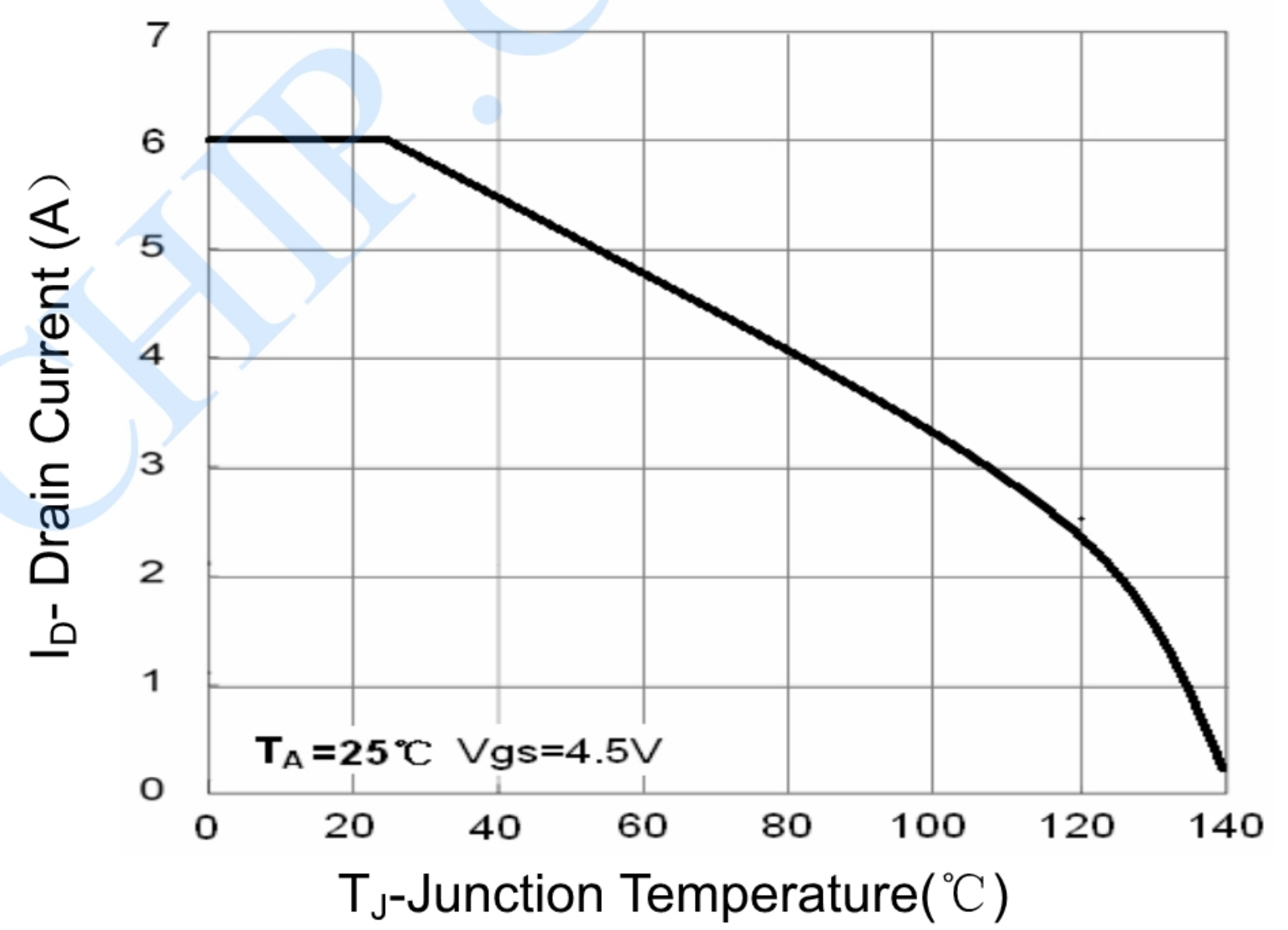


Fig.4 Drain Current

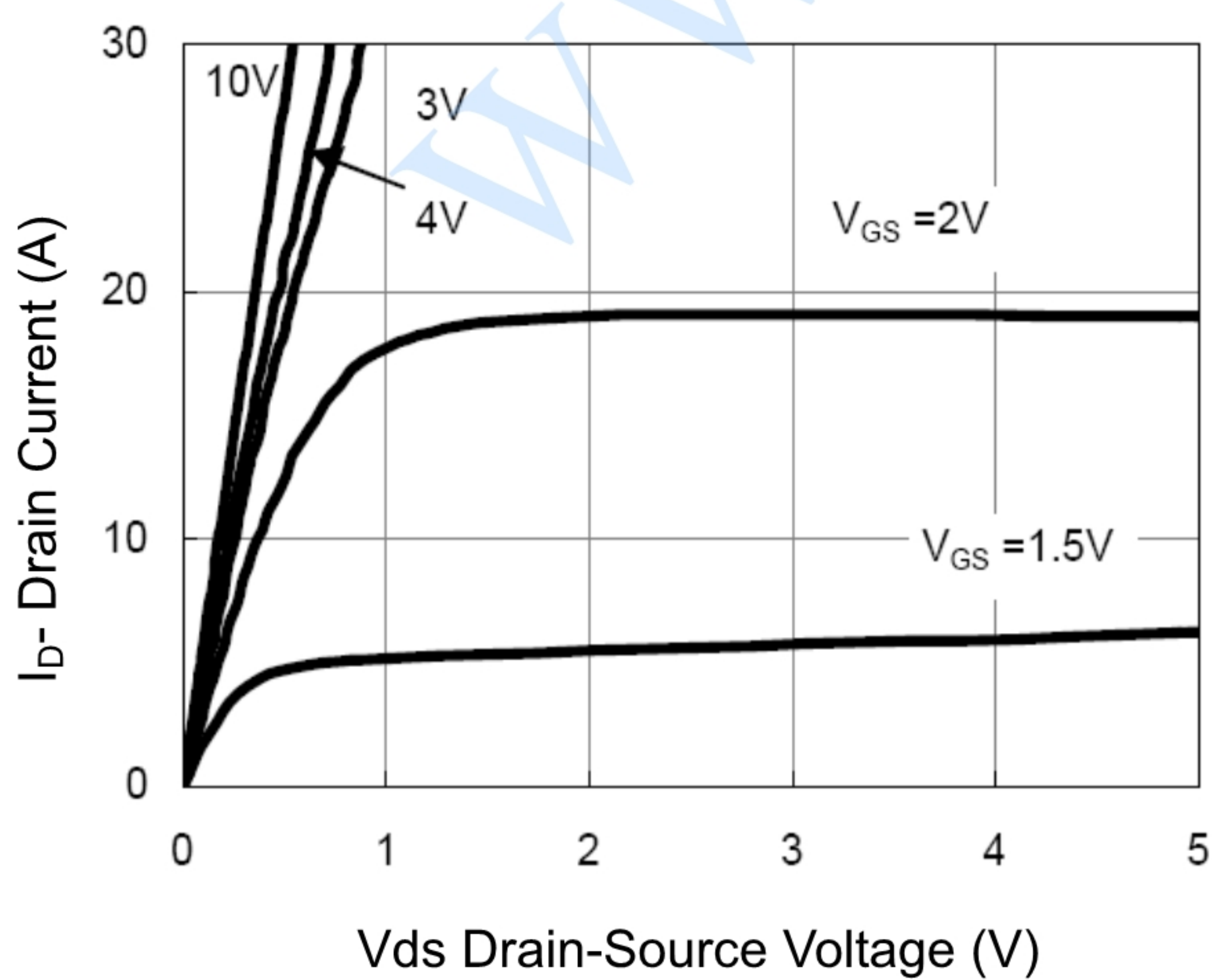


Fig.5 Output Characteristics

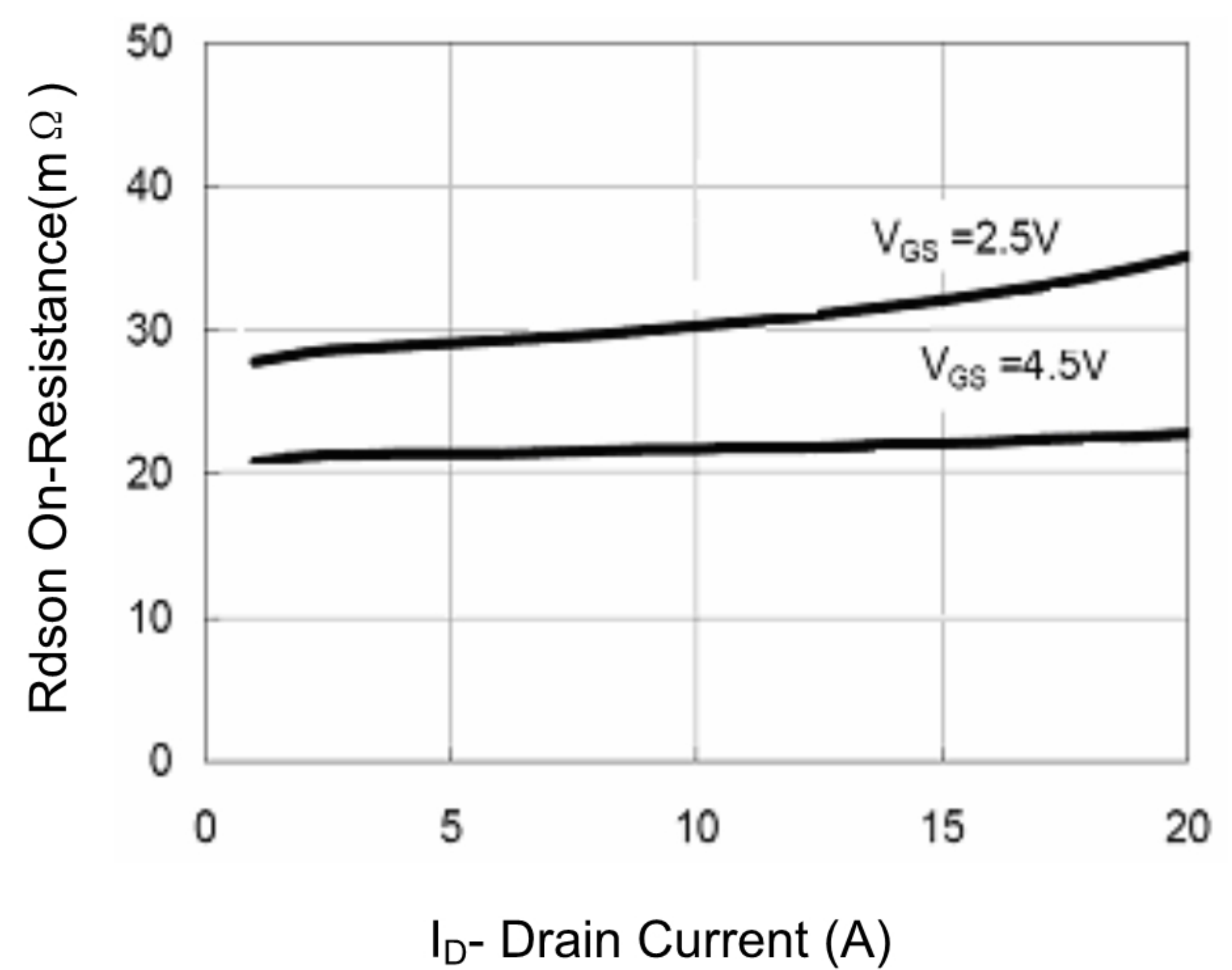
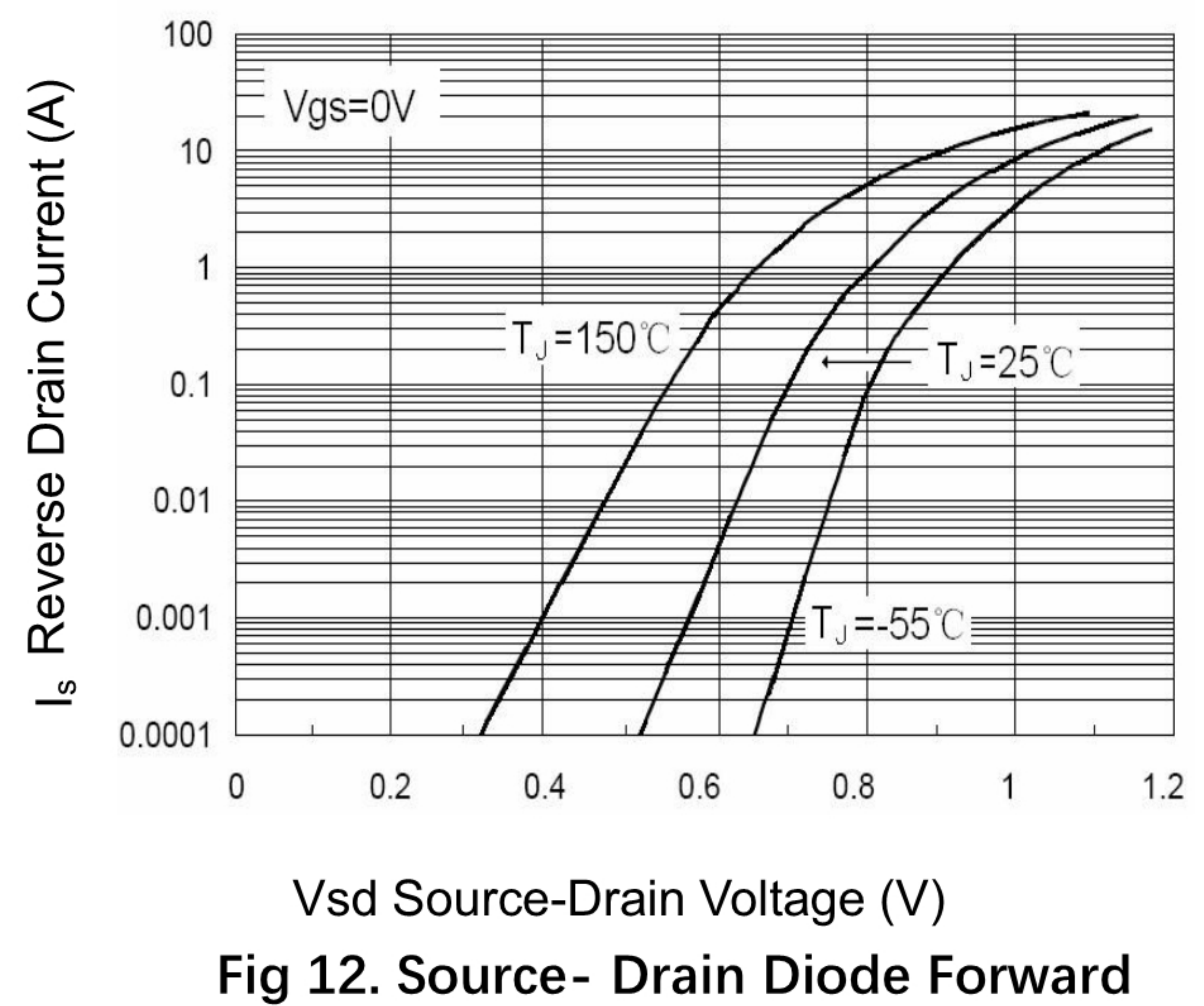
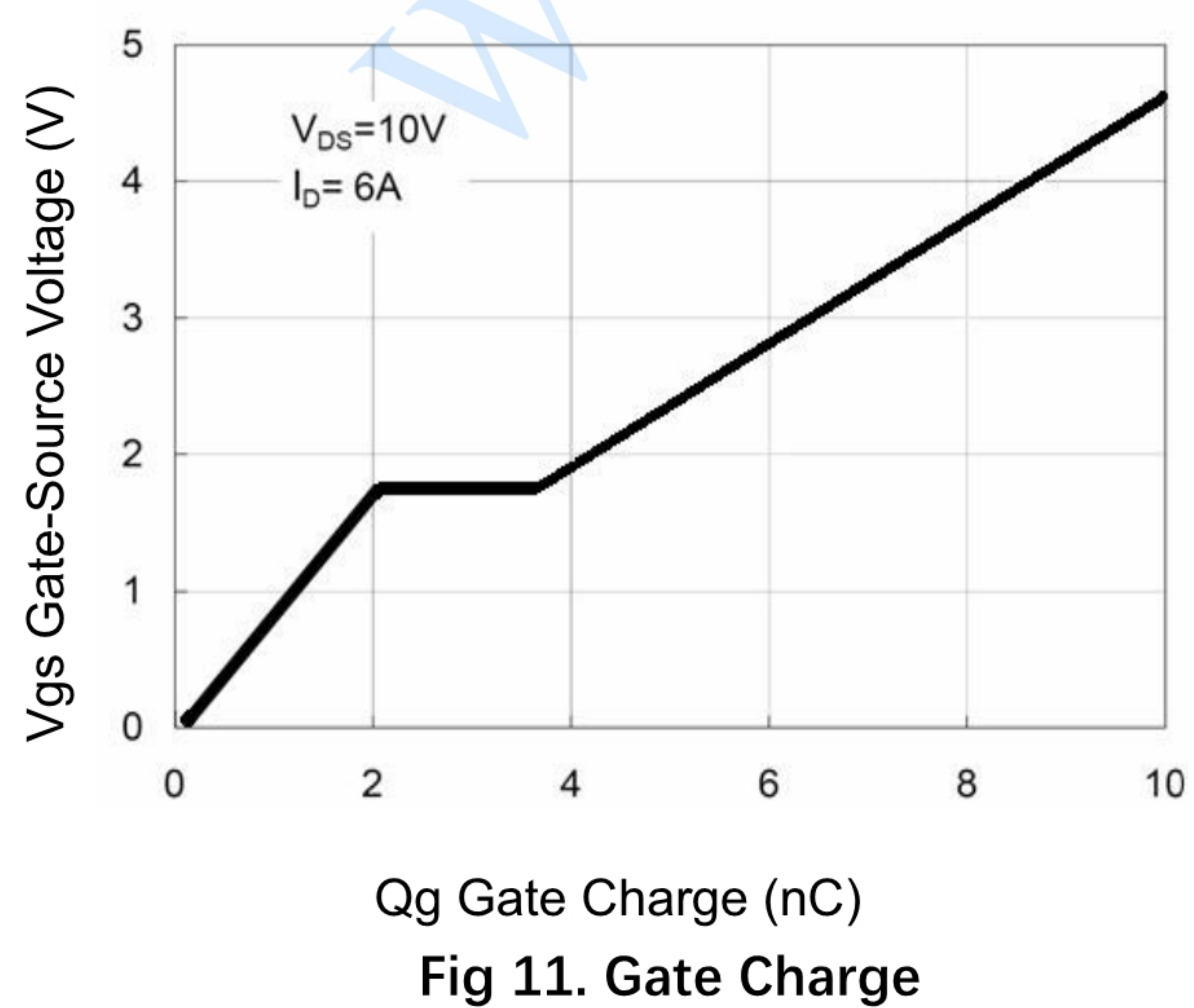
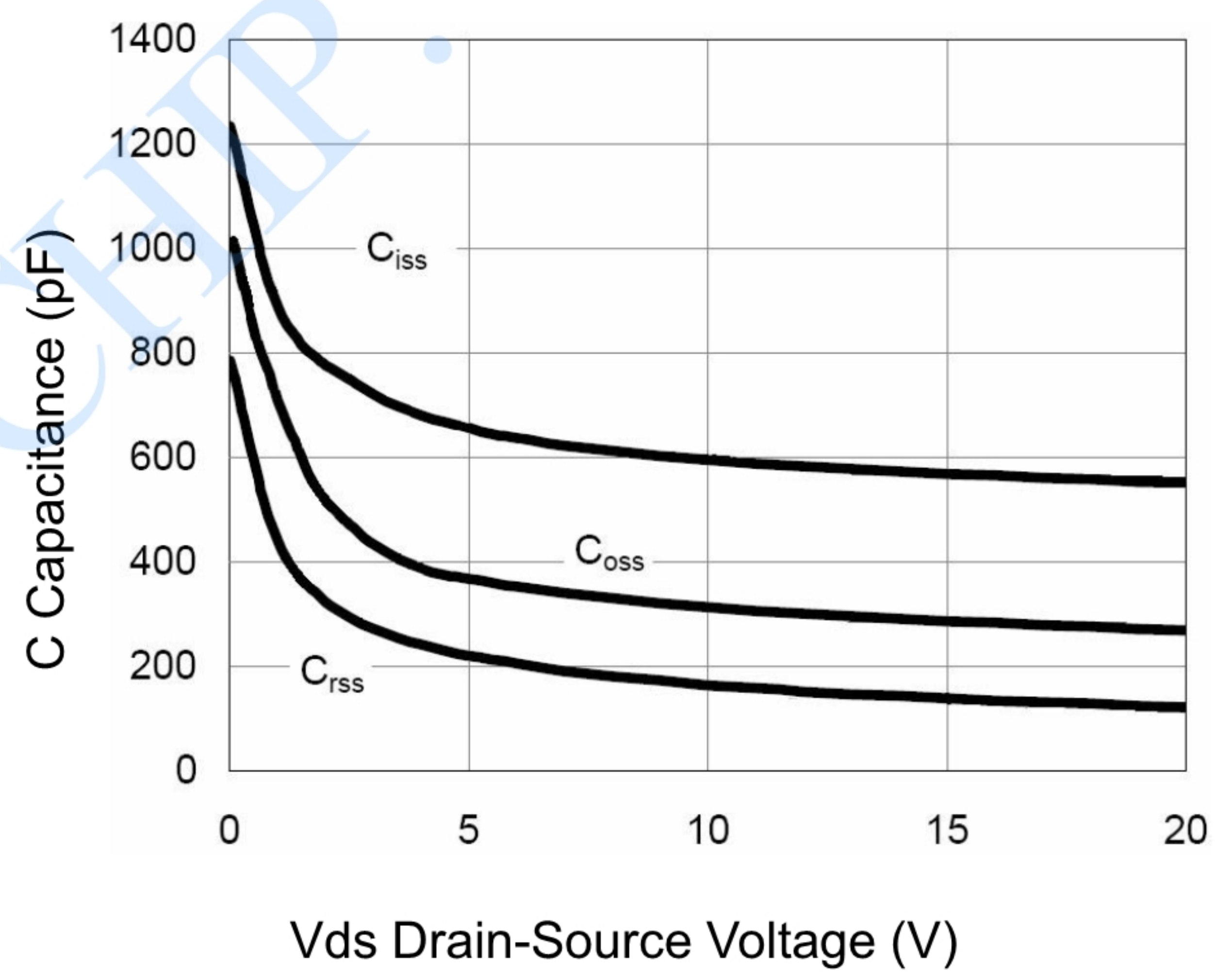
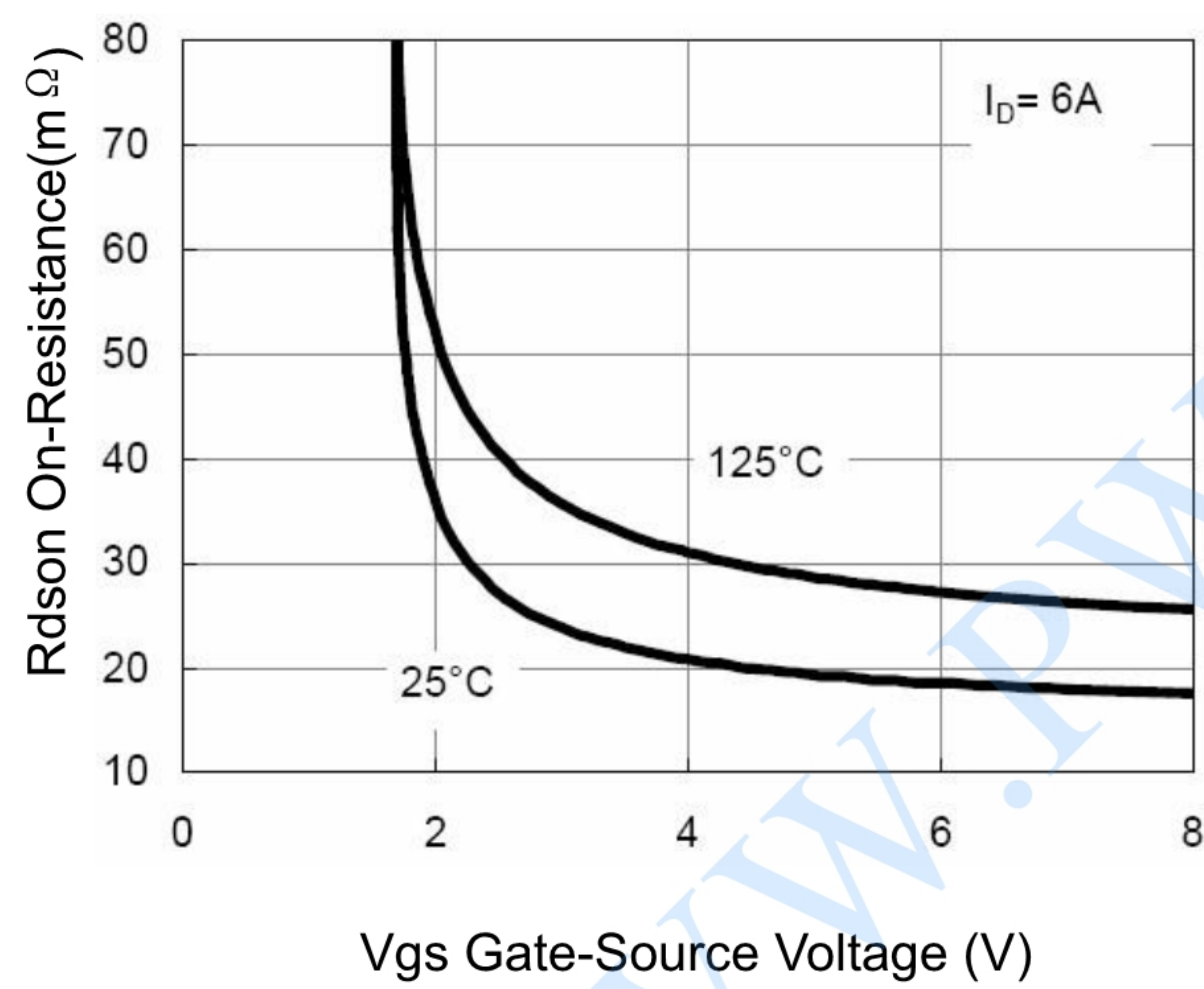
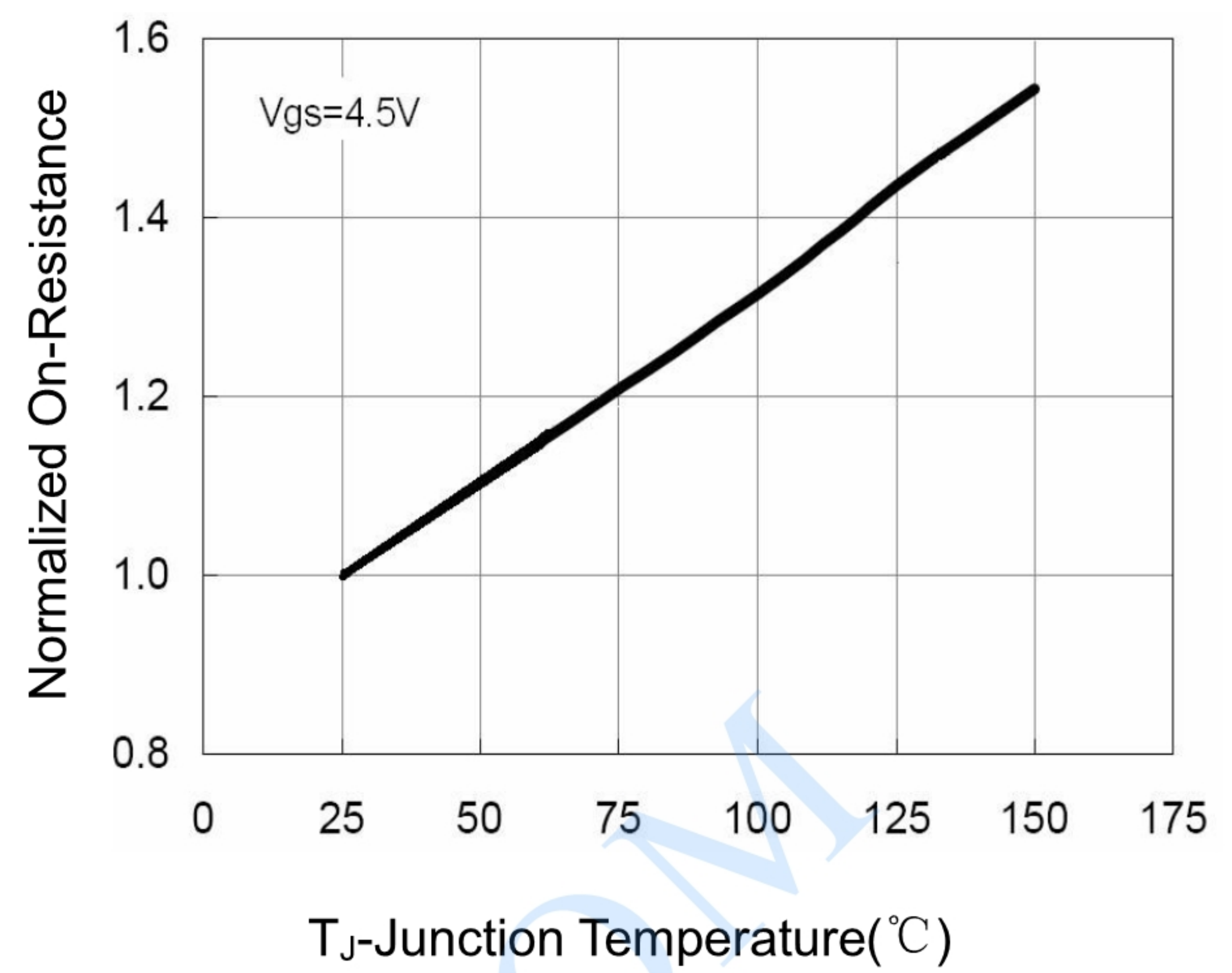
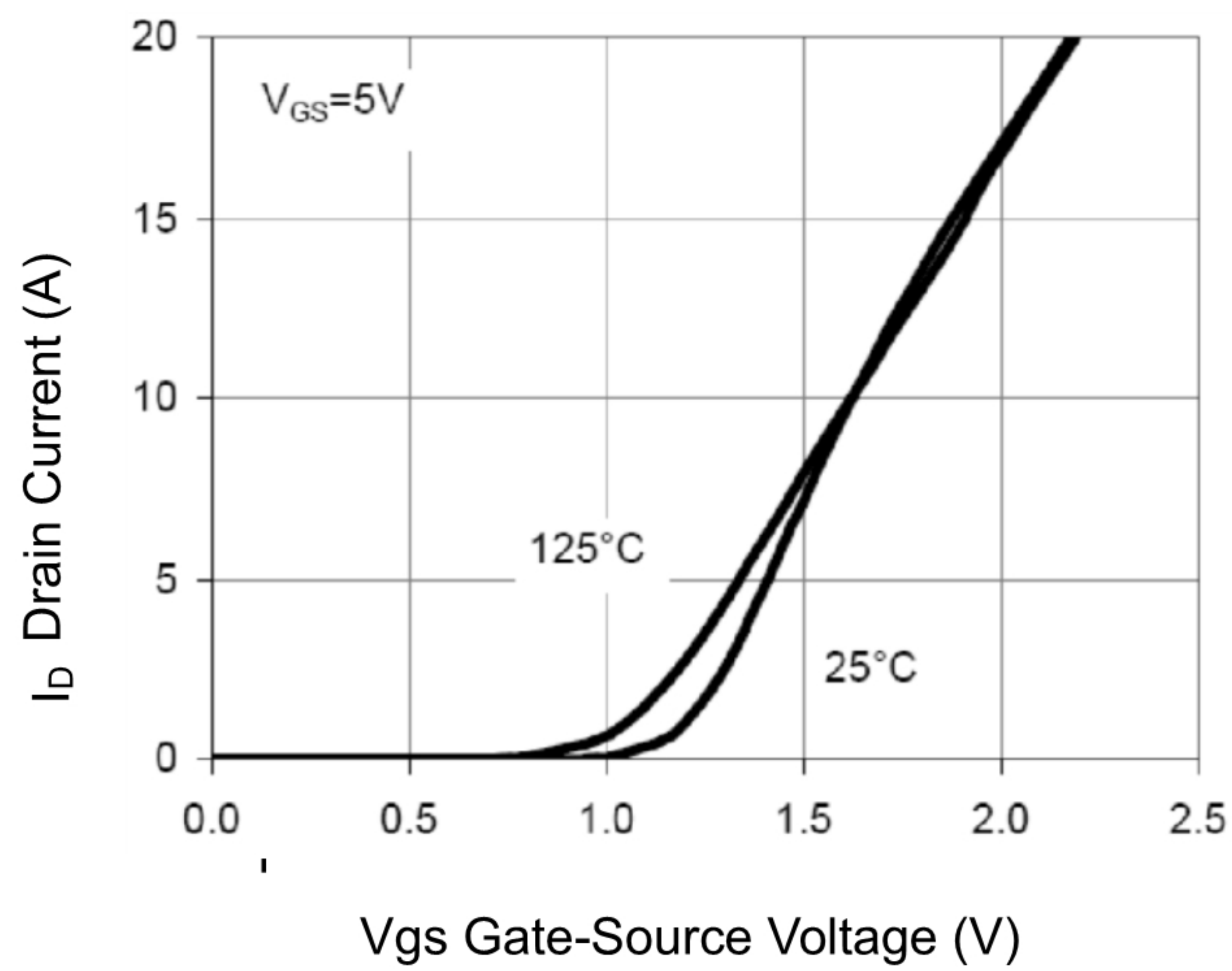


Fig.6 Drain-Source On-Resistance



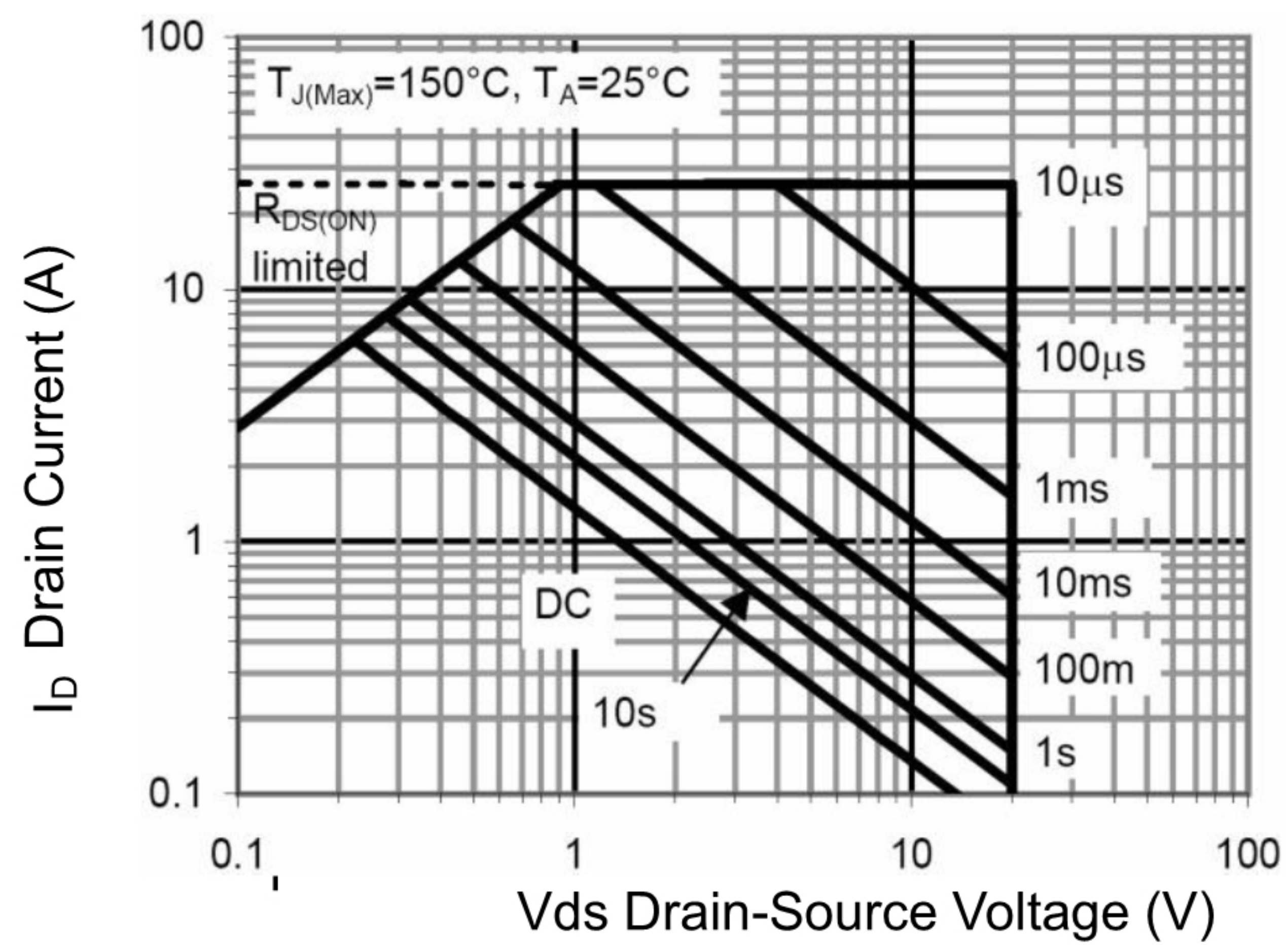


Figure 13 Safe Operation Area

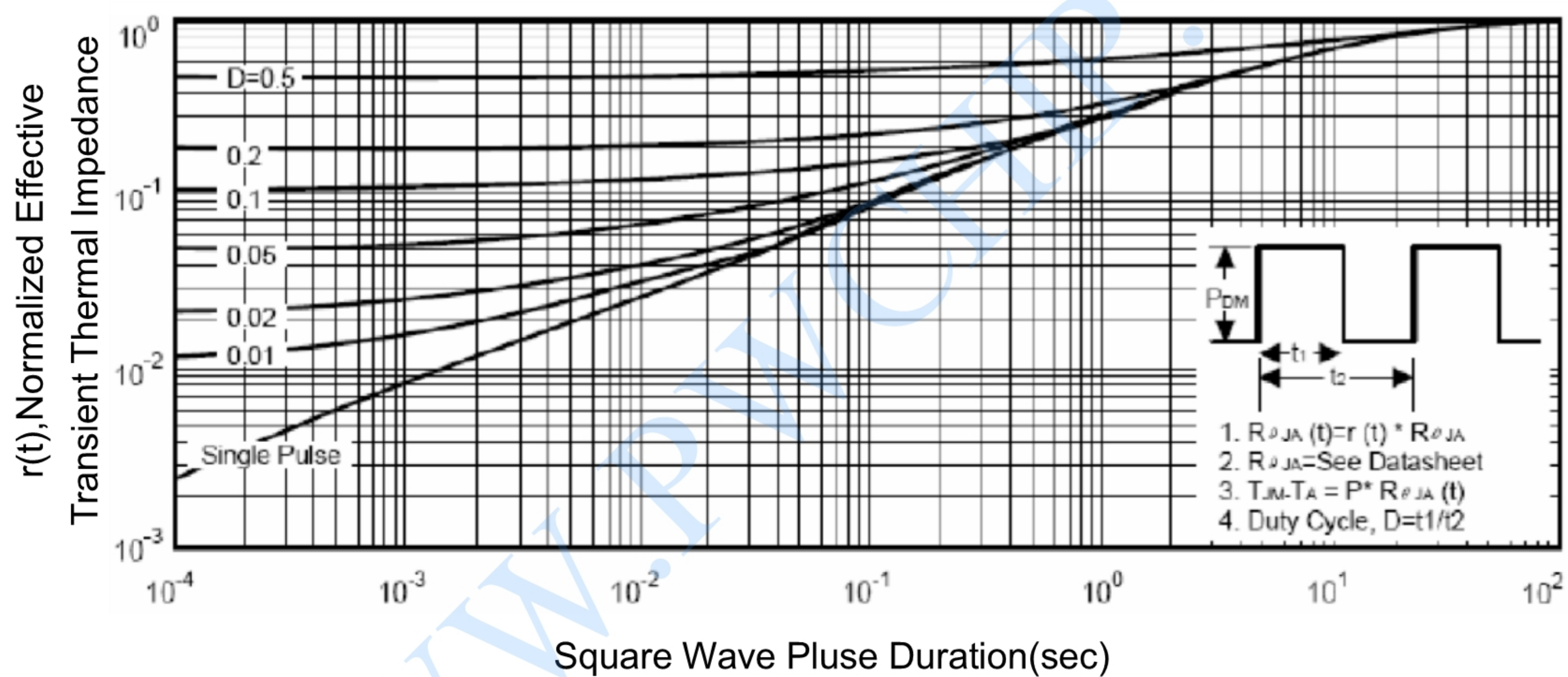
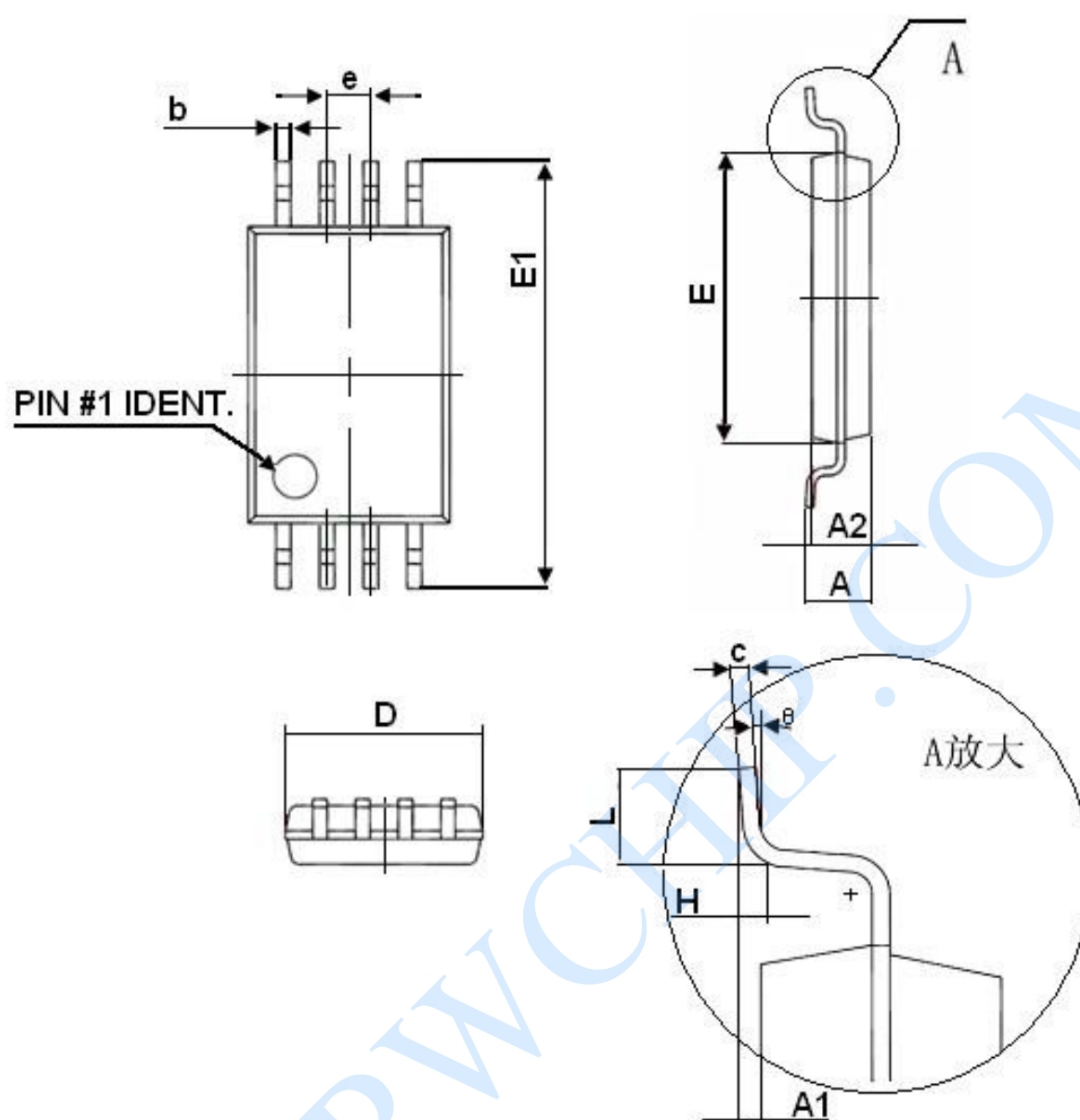


Figure 14 Normalized Maximum Transient Thermal Impedance



PACKAGE DESCRIPTION

TSSOP8



Symbol	Dimensions In Millimeters	
	Min	Max
D	2.900	3.100
E	4.300	4.500
b	0.190	0.300
c	0.090	0.200
E1	6.250	6.550
A		1.100
A2	0.800	1.000
A1	0.020	0.150
e	0.65(BSC)	
L	0.500	0.700
H	0.25(TYP)	
θ	1°	7°



IMPORTANT NOTICE

Wuxi PWChip Semi Technology CO., LTD (PW) reserves the right to make corrections, modifications, enhancements, improvements, and other changes to its products and services at any time and to discontinue any products or services. Customers should obtain the latest relevant information before placing orders and should verify that such information is current and complete.

PW assumes no liability for applications assistance or customer product design. Customers are responsible for their products and applications using PW components.

PW products are not authorized for use in safety-critical applications (such as life support devices or systems) where a failure of the PW product would reasonably be expected to affect the safety or effectiveness of that devices or systems.

The information included herein is believed to be accurate and reliable. However, PW assumes no responsibility for its use; nor for any infringement of patents or other rights of third parties which may result from its use.